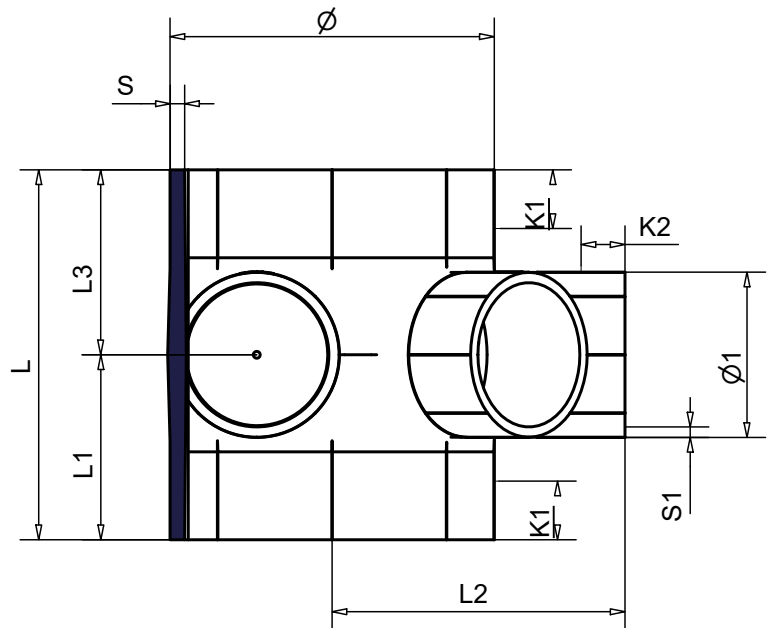
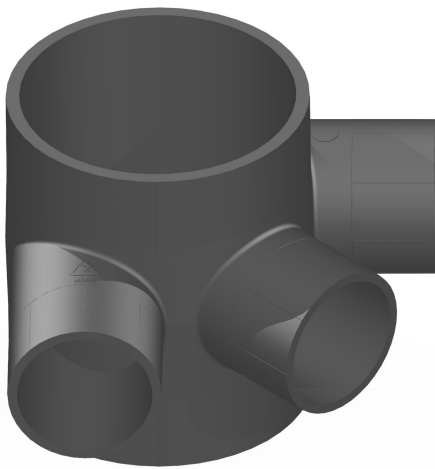


### HDPE 3 Way Boss Branch

P1

A compact 3 way boss branch where all three 56mm outlets can be used simultaneously with no cross flow. Allows for flush fitment to floor when fitted below a branch. Ideal for use with the 927 ring seal adaptor bends.



CODE	Ø/Ø1 mm	S mm	S1 mm	L mm	L1 mm	L2 mm	L3 mm	K1 mm	K2 mm	WEIGHT KG
921.110.56B	110/56	4.3	3	126	63	100	63	20	15	0.308

## Features and benefits

- Manufactured to BS EN 1519
- UK manufactured
- Can be electrofusion or butt welded
- Supplied with un-drilled bosses\*
- 56mm connections at 45 & 90 degrees
- Compact space-saving design

\*Hole saw required 48mm x 55mm cut length

PDS-034\_Version 1\_Issued 04/10/2024