



Properties

- 'r' Value of 0.76m² °C/W
- 'k' or 'λ' Value of 0.033W/m °C
- Flexible, is supplied in rolls
- Easy to build as brickwork proceeds
- Easily cut with trowel or knife
- Light and robust
- Economical
- CFC and HFC free
- Also suitable for use with wooden window frames



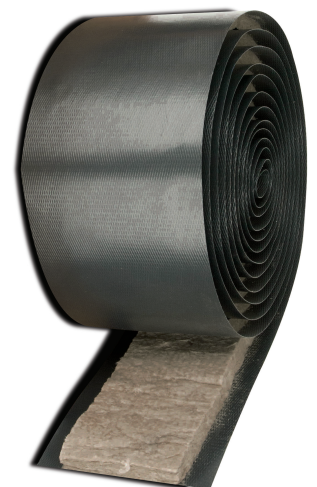
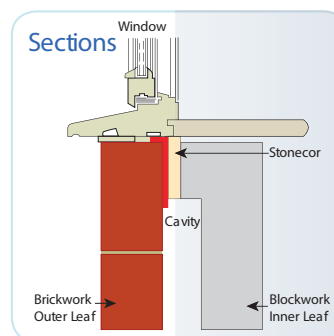
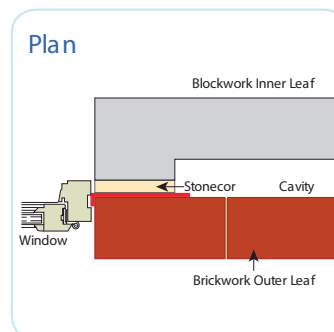
Multi purpose super flexible compressible mineral wool insulated DPC combining the advantages of Icelandic lava stone wool with a traditional DPC. Stonecor meets today's thermal and acoustic requirements in construction. Icerock is manufactured in Iceland and completely environmentally friendly in manufacture and use, and is also non-combustible to 700°C. The Polyethylene DPC is manufactured to BS6515.

Supplied in 10 Metre Rolls 5 Per Pack. 165mm DPC x 100mm insulation 225mm DPC x 150mm insulation.

Stonecor can also be manufactured to special order with DPC widths up to 800mm.

Installation/site work

Stonecor is simply and easily installed. Its flexibility enables it to be built in with no problems as brickwork proceeds, similar to traditional DPC's. It must be firmly built in as work proceeds with the blockwork and the Icerock tightly butted together. Where a joint occurs a minimum lap of 100mm of DPC is recommended.



Polypipe TDI

Unit 3 Unity Complex Dale Rd North Darley Dale Matlock Derbyshire DE4 2HX

Tel: +44 (0) 1629 733177 Fax: +44 (0) 1629 732779

E-mail: tdi.sales@polypipe.com Website: www.polypipe.com