

**RIDGISTORM-XL WITH LOW FLOW CHANNEL**

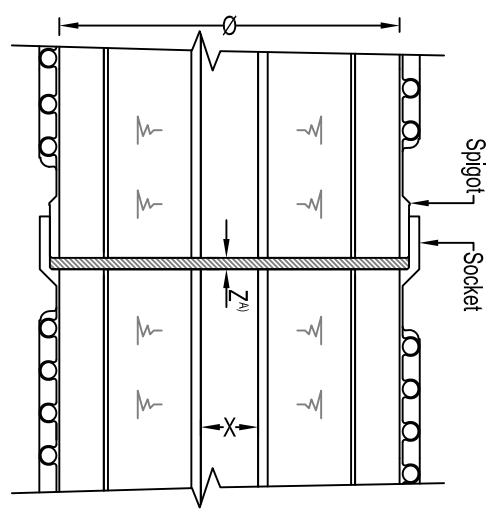
Scale (1:15)

**Ø900 MM - Ø3000 MM CARRIER PIPE**

X	150	225	300
Y	14	21	27.5

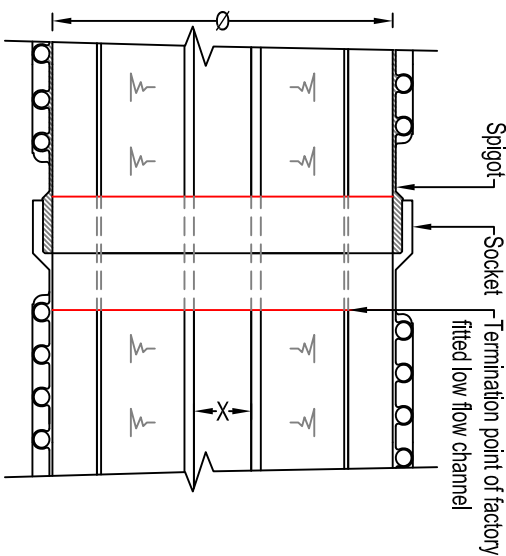
**Notes:**

1. Pipes with low flow channel installed are available in lengths between 1250mm - 12000mm.
2. For pipes that are Ø900mm - Ø1800mm, low flow channelling is available factory fitted with a ring seal joint.
3. For pipes that are Ø900 mm - Ø3000 mm, low flow channelling is available factory fitted with an electro-fusion or internal extrusion weld joint.



**LOW FLOW JOINTS - RING SEAL**

Scale 1:20



**LOW FLOW JOINTS - WELDED**

Scale 1:20

**MAXIMUM ALLOWABLE RING SEAL JOINT GAP**

Ø (mm)	Z (mm) <sup>(A)</sup>
900	7.9
1050	9.2
1200	10.5
1500	13.1
1800	15.7

**Note:**  
If required, larger gaps (≤25mm) can be welded over by Polypipe Product Support.

**WELDED JOINTING SUMMARY:**

If the electro-fusion or internal extrusion welded option is chosen, it is important to note the following:

Prefabricated low flow channel will terminate 150mm short each side of the joint, to enable the pipe jointing process to take place. A bridging piece will be provided to span the gap, which will require Polypipe Site Services to weld in-situ.

- JOINTING NOTES (A)**
1. Please note, all joints should be fully pushed home.

- LOW FLOW CHANNEL NOTES**
1. If Polypipe Site Services is required for jointing, please contact the office on: 01509 615100 for further information and pricing.
  2. More information is available in the Ridgistorm-XL low flow channel installation guide.
  3. If information cannot be found in the above document then please contact the Technical Team for further support on: 01509 615100.
  4. Tank sewers with a low flow channel should be built to a fall to minimise standing water.
  5. A weld height of 5mm will be present within the channel.

- GENERAL NOTES**
1. All dimensions in millimetres, unless otherwise stated.
  2. All dimensions are nominal and may vary within manufacturing or construction tolerances.
  3. All site temporary and enabling works by others.
  4. Ridgistorm-XL units to be installed in accordance with Polypipe Civils recommendations (refer to Polypipe technical guidance for further information); giving due consideration to the requirements of the organisation who will be taking ultimate ownership of the installation.
  5. Dimensions are based on a minimum stiffness class SN2 pipe; corresponding to the standardised pipe profiles current at the time of this drawing's issue.
  6. This drawing is intended for guidance only. Confirmation of the information contained within this document should be sought from the consulting engineers before final design or construction activities commence.
  7. Unless otherwise stated, all Ridgistorm-XL is supplied to site without direct means of lifting incorporated. The lift supervisor must assess and plan the lift, in the circumstances of the lift, and provide slings and/or other controls as deemed necessary to ensure a safe lift.
  8. Minimum and maximum cover depths applicable, dictated by the expected native ground conditions, trafficking and proposed Ridgistorm-XL pipe specification.

B	Note 4 and 5 was added to LFC notes	10/07/18_HAS
A	Notes were updated	03/07/18_HAS
REV	AMENDMENT	DATE

**Polypipe**

Polypipe Civils  
Cherwood Business Park  
North Road, Loughborough  
Leicestershire, LE11 1LE  
Tel: 01509 615100  
Fax: 01509 615215  
www.polypipe.com/civils

PROJECT NAME: **RIDGISTORM-XL STANDARD DETAILS**

PROJECT TYPE: **LOW FLOW CHANNEL**

STATUS: **FOR INFORMATION**

SHEET SIZE: <b>A3</b>	SHEET NO.: <b>1 of 1</b>	DRAWN BY: <b>BM</b>
SCALE: <b>AS SHOWN</b>	DATE: <b>15/11/17</b>	
DRAWING NO.: <b>RST_SD_LF_001</b>	REV: <b>B</b>	

The information in this document is of an illustrative nature and is supplied by Polypipe Civils without charge. This document does not form the whole or any part of a contract or intended contract with the user. The information within this document should not be solely relied upon to determine the suitability or installation requirements of our products for a proposed application and expected site conditions; expert advice should be sought in this respect. Final determination of the suitability of any information or material for the use contemplated and the manner of use is the sole responsibility of the user and the user must assume all risk and liability in connection therewith. Further information with regard to liabilities may be found at [www.polypipe.com/disclaimer](http://www.polypipe.com/disclaimer).