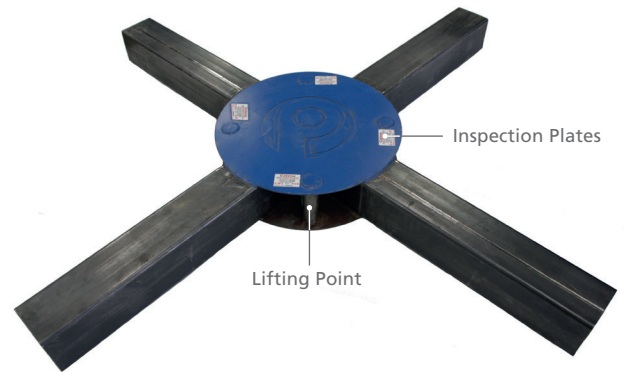


The Ridgistorm-XL Jointing Frame is a multi-use tool for assisting the jointing of Ridgistorm-XL pipe. The four legs of the frame are designed to provide a surface which interfaces with the outer diameter of the Ridgistorm-XL pipe and the pushing pad in the centre provides a central surface to push the frame and pipe forward. For convenience and safe handling, the Jointing Frame comes with four lifting points that can be used for positioning the Jointing Frame during a jointing operation. Each lifting point is rated to be able to take the unit's entire weight.



Lifting Instruction

The lift must be planned and carried out by a "competent person" as defined by the LEEA¹ and under what are deemed the United Kingdoms normal ambient temperatures and environmental conditions (0° - 25°C) using one or more of the 4 designated lifting points. All responsibility for the lifting operation and lifting accessories used lie with the competent person in charge of the lift, but it is recommended that a sling is used with a minimum 1 tonne safe working load (SWL) which is in good safe working order and is inspected prior to use. It is the responsibility of the competent person to pre-assess, plan and supervise the lift, ensuring the right additional equipment is used where the assessment shows it is necessary.

Lifting Guidance

Pre-lift Inspection

- The Jointing Frame is dispatched by Polypipe with a third party certificate of inspection ensuring it is in good working order and free of defects or damage that would impair its function.
- Prior to any use, it is the competent person's responsibility to inspect the frame for damage or defects that may cause the frame to fail during normal use.
- Please ensure the Jointing Frame inspection plates are present and legible.
- Before lifting the Jointing Frame using the designated lifting points, a check to ensure the frame is not caught on anything should be carried out to ensure there is no accidental overloading of the lifting points.

Additional Guidance

Pipe Jointing

- The Jointing Frame should be offered up to the end of the pipe keeping the frame as central as possible.
- Appropriate pressure should be smoothly applied to the central pad in order to push the Jointing Frame and pipe forward.
- Care should be taken to ensure that the pipe and Jointing Frame are clear of any impedance or obstruction that could cause the frame to be overloaded.

Post Use Guidance

- Once the Jointing Frame has been used it should be stored in a safe and dry environment to avoid damage and corrosion.

Important

All lifts should be carried out by a "competent person" under a site specific risk assessment and lifting plan, adhering to the "lifting instructions" contained within this document. Polypipe are not liable for any lift carried out by a third party.



All descriptions and illustrations in this publication are intended for guidance only and shall not constitute a 'sale by description'. All dimensions and weights given are nominal and Polypipe may modify and change the information, products and specifications from time to time for a variety of reasons, without prior notice. The information in this publication is provided 'as is' on June 2018. Updates will not be issued automatically. This information is not intended to have any legal effect, whether by way of advice, representation or warranty (express or implied). We accept no liability whatsoever (to the extent permitted by law) if you place any reliance on this publication you must do so at your own risk. All rights reserved. Copyright in this publication belongs to Polypipe and all such copyright may not be used, sold, copied or reproduced in whole or part in any manner in any media to any person without prior consent. © Polypipe is a registered trademark of Polypipe. All Polypipe products are protected by Design Right under CDPA 1988. Copyright © 2018 Polypipe. All rights reserved.