

### Connecting waste pipes to soil stacks via two part boss 112 and adaptor saddle 115P

- Cut correct hole size and deburr (Fig.1).  
For correct size hole cutter refer to table below.
- Remove swarf and clean mating surfaces with Terrain cleaner 9101 (Fig.2).
- Apply solvent cement 9100 to all mating surfaces (Fig.3).
- Pass inner component outward through hole from the inside of the pipe and push the outer component firmly on to it ensuring that the key and keyway are lined up. Ensure engraving reads: top 91¼ for waste top 88¾ for vent (Fig.4).
- Insert toggle bolt and screw up until boss is fully closed with flanges in contact with the pipe both inside and outside. (Fig.5).  
NOTE: Leave toggle bolt in position for approximately 15 minutes.

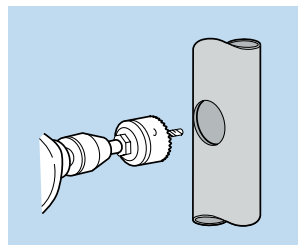


Fig.1

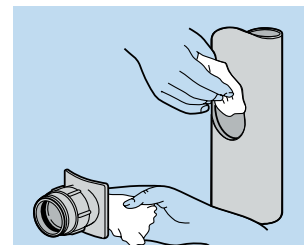


Fig.2

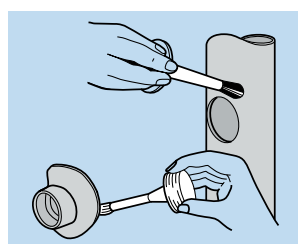


Fig.3

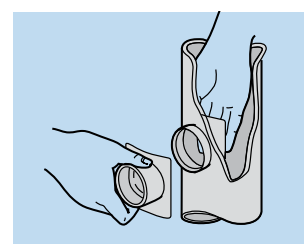


Fig.4

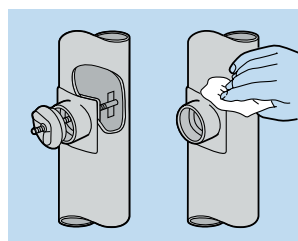


Fig.5

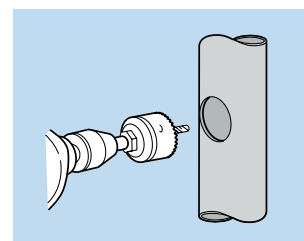


Fig.6

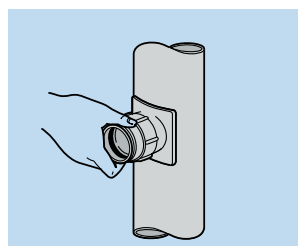


Fig.7



Fig.8

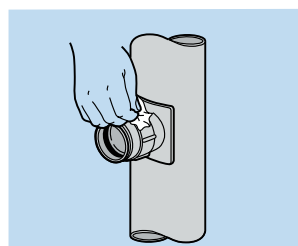


Fig.9

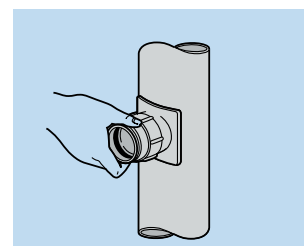


Fig.10

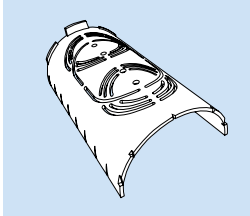
#### HOLE SAW SIZES

Aperture diameter (mm)	To suit fitting ref.
33	281.43
48	112.4.125 - 135.3 - 112P.4.125
51	117* - 112P.4.15
57	112.X.15 - 115P.4
60	122.4.125 - 112P.4.2
64	122.4.15
70	112.X.2
73	135.4 - 135.6
75	122.4.2

\* All sizes

### Self locking boss 122

- Cut correct hole size and deburr. For correct size hole cutter refer to table on page 59 (Fig.6).
- Slacken nut on boss to full extent. Enter boss into hole keeping the keyway to the last piece to enter the hole. Tighten outer locking nut (Fig.7).
- Once satisfied that the boss fits neatly into the pipe remove and clean all mating surfaces with Terrain cleaner 9101 (Fig.8).
- Apply solvent cement 9100 to all mating surfaces (Fig.9).
- Re-enter boss into the pipe. Screw up until hand tight and remove excess cement (Fig.10).
- Template available ref: 9105.500.



9105.500

### Access door 135 (110mm & 160mm)

- Set out centre lines as described on inside of access door. Check aperture will be parallel with axis of pipe (Fig.11).
- Drill two overlapping holes of correct size at 45mm centres (Fig.12).
- Remove sides of aperture using a medium file (Fig.13).
- Slacken door to its fullest extent. Push the inner part of the door into the hole at a slight angle turning at the same time. When it is fully entered, turn it parallel to the axis of the pipe ensuring that the inner part locates into the hole. (Fig.14).
- Ensure seal ring is lubricated prior to fitting. Tighten the screw whilst pulling the door outwards. Do not over tighten (Fig.15)

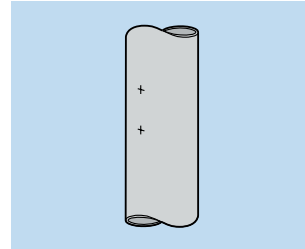


Fig.11

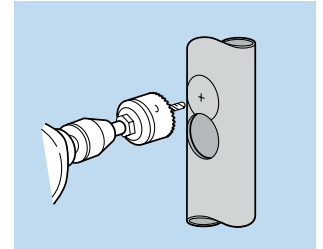


Fig.12

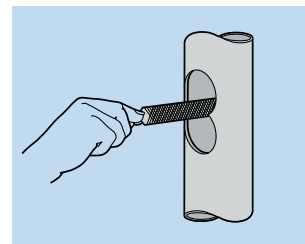


Fig.13

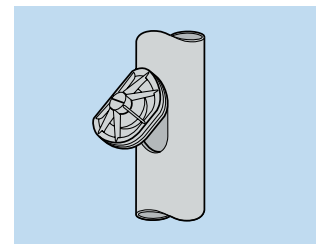


Fig.14

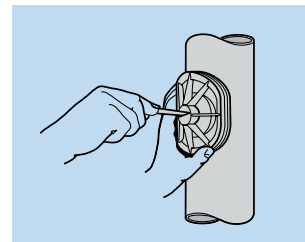


Fig.15



### Contact Us

to find out about our Technical Workshop

Look out  
for our next  
Technical  
Bulletin