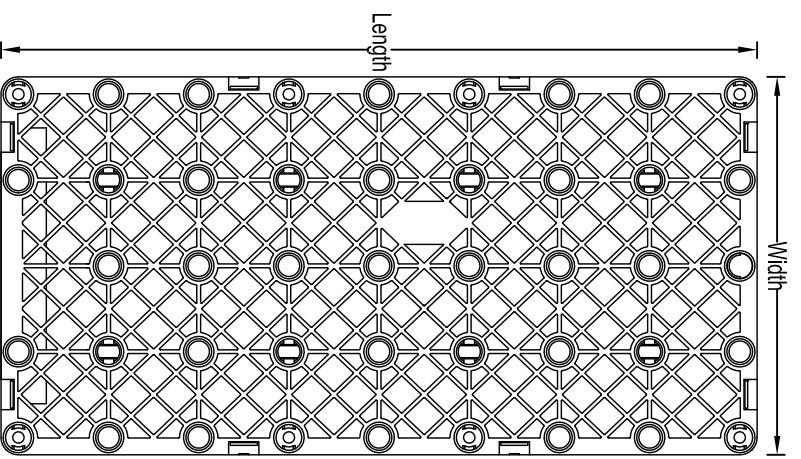
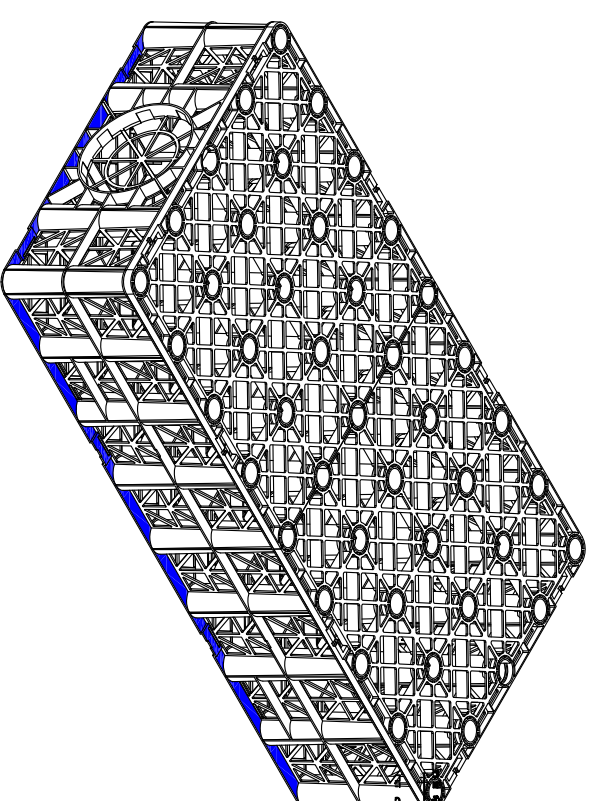


POLYSTORM CELL
Product Code: PSM3

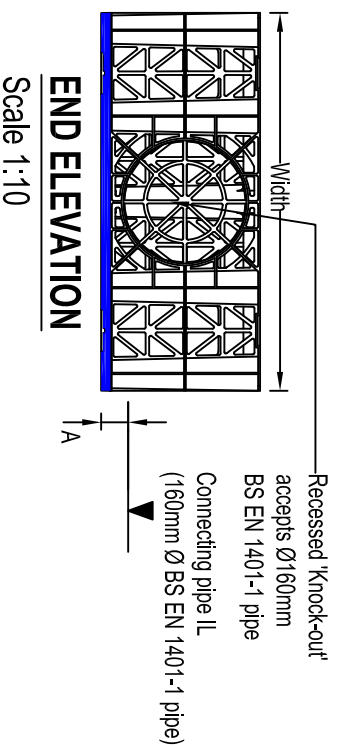
POLYSTORM TABLE									
NAME	CODE	LENGTH (mm)	WIDTH (mm)	HEIGHT (mm)	A (mm)	VERTICAL STRENGTH (kN/m ²)	LATERAL STRENGTH (kN/m ²)	COLOUR	MATERIAL
Polystorm Xtra	PSM3	1000	500	210	36	834	93	Grey	Prime Polypropylene



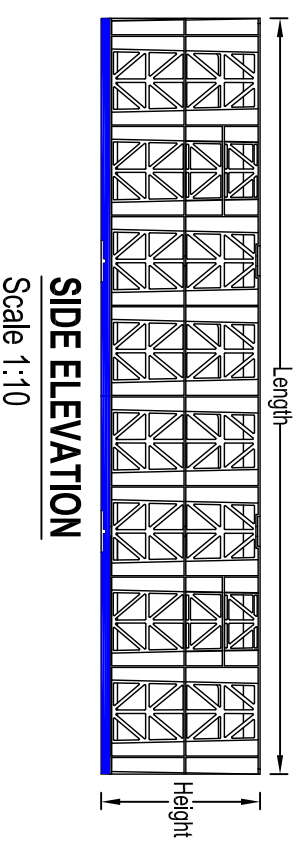
PLAN VIEW
Scale 1:10



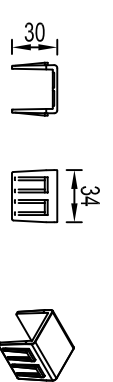
ISOMETRIC VIEW
Scale 1:10



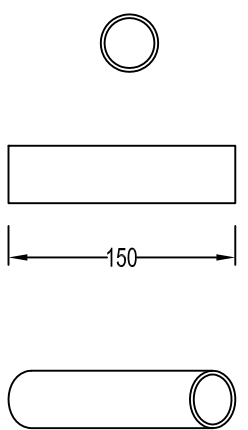
END ELEVATION
Scale 1:10



SIDE ELEVATION
Scale 1:10



POLYSTORM CLIP
Scale 1:5



POLYSTORM SHEAR CONNECTOR
Scale 1:5

POLYSTORM SYSTEM NOTES

1. Polystorm units are available with either a Ø225mm or Ø300mm Rigidrain socket upon request. Please refer to:- PSM_SD_005

NOTES

1. All dimensions in millimetres, unless otherwise stated.
2. All dimensions are nominal and may vary within manufacturing or construction tolerances.
3. All site temporary and enabling works by others.
4. Polypipe products to be installed in accordance with Polypipe civils recommendations (refer to Polypipe technical guidance for further information), giving due consideration to the requirements of the organisation who will be taking ultimate ownership of the installation.
5. This drawing is intended for guidance only. Confirmation of the information contained within this document should be sought from the consulting engineers before final design or construction activities commence.

The information in this document is of an illustrative nature and is supplied by Polypipe Civils without charge. This document does not form the whole or any part of a contract or intended contract with the user. The information within this document should not be solely relied upon to determine the suitability or installation requirements of our products for a proposed application and expected site conditions; expert advice should be sought in this respect. Final determination of the suitability of any information or material for the use contemplated and the manner of use is the sole responsibility of the user and the user must assume all risk and liability in connection therewith. Further information with regard to liabilities may be found at www.polypipe.com/disclaimer.

Polypipe
Polypipe Civils
Charmwood Business Park,
North Road, Loughborough,
Leicestershire, LE11 1LE
Tel: 01509 615100
Fax: 01509 615215
www.polypipe.com/civils
www.polypipe.com/wms

PROJECT	POLYSTORM STANDARD DETAILS	
TITLE	POLYSTORM XTRA GEOCELLULAR COMPONENT	
STATUS	FOR INFORMATION	
DATE	17/03/16	DRAWN BY JL
ORIGINAL SIZE	A3	SCALE AS SHOWN
DRAWING NO.	PSM_SD_002	REV.