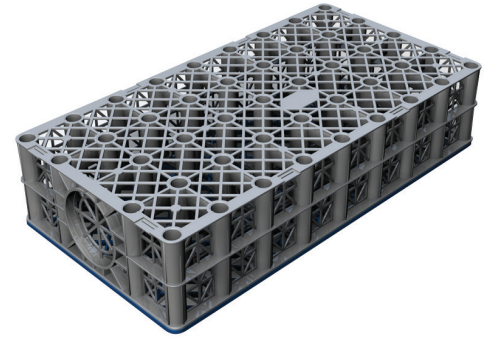


Product code: PSM3

Polystorm Xtra has been designed for use in heavily trafficked, shallow, non-sub-base applications such as lorry parks and industrial access roads where reduced cover is required. It has a vertical compressive strength of 83 tonnes/m².



Applications

The Polystorm Xtra modular cells are combined to form a structure that receives rainwater collected from roofs or surface drains. The rainwater is then either attenuated by the structure, when wrapped in an impermeable membrane, or infiltrated by the structure, when wrapped in a permeable geotextile.

Key Benefits

- Vertical compressive strength of 83 tonnes/m²
- Ideal for retention, attenuation and infiltration applications with a suitable geomembrane or geotextile
- Designed for heavily trafficked conditions with shallow cover depths
- Allows flexibility of shape – ideal for shallow excavation systems, narrow strips or use in restricted areas
- Can be used as part of a value engineered hybrid system in trafficked applications with Polystorm-R and Polystorm Deep
- Installed with blue lid facing down for increased strength
- Undergone testing in accordance to BBA certification
- Integrated inlet and outlet
- 3D flow throughout the structure
- 94% void ratio
- Light in weight yet robust – excellent Health & Safety and installation benefits
- 100% recyclable
- 50 years creep limited life expectancy

Technical Support

Detailed guidance and assistance is available.

For further information, please contact our Technical Team on **+44 (0) 1509 615100** or email civils@polypipe.com or visit www.polypipe.com/civils-technical-hub

ELEMENT	VALUE
PHYSICAL PROPERTIES	
Length	1m
Width	0.5m
Depth	0.21m
Total volume	0.105m ³
Unit weight	6kg
Unit storage volume	0.0986m ³ (98 litres)
Void ratio	94%
SHORT TERM COMPRESSIVE STRENGTH	
Vertical	Maximum 834kN/m ² *
Lateral	Maximum 93kN/m ² *
SHORT TERM DEFLECTION	
Vertical	97.8kN/m ² per mm
Lateral	7.1kN/m ² per mm
OTHER PROPERTIES	
Maximum burial depths:	
Heavy trafficked	4.8m**
Light trafficked	5.3m**
Non-trafficked	5.45m**

Each unit includes 4 Clips and 2 Shear Connectors.

* Compressive strength at yield, maximum recommended value for design purposes.

** Based on ground conditions being dense sand and gravel with no groundwater present using the calculation methodology detailed within CIRIA C680 (2008). Where ground conditions differ please consult our water management solutions technical department on +44 (0) 1509 615100.

Polystorm Xtra Modular Cell can be utilised in these SuDS techniques

TECHNIQUES													
Blue-Green roofs	Podium Decks	Trees	Sports Pitches	Cycle Paths	Permeable Paving (sub base & podium)	Bioretention & Rain Gardens	Attenuation Storage Tanks	Infiltration	Swales	Filter Drains	Detention Basins	Ponds & Wetlands	Filter Strips
			✓			✓	✓	✓	✓	✓	✓	✓	

Visit www.polypipe.com/greeninfrastructure

All descriptions and illustrations in this publication are intended for guidance only and shall not constitute a 'sale by description'. All dimensions and weights given are nominal and Polypipe may modify and change the information, products and specifications from time to time for a variety of reasons, without prior notice. The information in this publication is provided 'as is' on December 2018. Updates will not be issued automatically. This information is not intended to have any legal effect, whether by way of advice, representation or warranty (express or implied). We accept no liability whatsoever (to the extent permitted by law) if you place any reliance on this publication you must do so at your own risk. All rights reserved. Copyright in this publication belongs to Polypipe and all such copyright may not be used, sold, copied or reproduced in whole or part in any manner in any media to any person without prior consent. © Polypipe is a registered trademark of Polypipe. All Polypipe products are protected by Design Right under CDPA 1988. Copyright © 2018 Polypipe. All rights reserved.