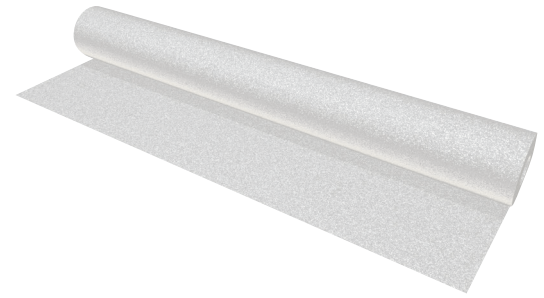


Product code: PVTS1000

Polystorm Soakaway Geotextile PVTS1000 is a UV stabilized, polypropylene continuous filament needle-punched non-woven geotextile, designed to complement our existing Polystorm modular geocellular system.



Applications

Polystorm Soakaway Geotextile is suitable for use as part of our Polystorm geocellular system for infiltration applications, and can also be incorporated into drainage trenches.

Key Benefits

- Excellent filtration properties, including high water permeability and optimum soil retention capability
- Offers quick and efficient draining of soil
- Resistant to all chemical and biological media that usually occur in surrounding soils and construction materials
- High mechanical resistance
- 100 year material design life

Installation

Polystorm Soakaway Geotextile will be laid to suit site specific requirements. Overlaps shall be joined together with double sided jointing tape. Ensure geotextile is clean and debris free before installing Polystorm.

Technical Support

Detailed guidance and assistance is available. For further information, please contact our Technical Team on **+44 (0) 1509 615 100** or email civils@polypipe.com or visit www.polypipe.com/civils-technical-hub

APPLICATION	PRODUCT
LOADING OVER TANK	TS1000
Landscape (min cover 0.5m)	✓
Car parks (min cover 0.6-1.0m+)	✓
HGV (min cover 1.0m+)	x

ELEMENT	VALUE
PHYSICAL PROPERTIES	
Nominal Thickness	0.8mm
Weight	105g/m ²
Roll Width	4.5m
Roll Length	100m
Opening Size	0.12mm
MECHANICAL PROPERTIES	
Tensile Strength (Machine direction)	8kN/m ²
Tensile Strength (Cross direction)	8kN/m ²
Elongation at max. load (Machine direction)	90%
Elongation at max. load (Cross direction)	75%
Puncture Resistance (CBR)	1500N
Dynamic Puncture Resistance (Cone drop)	26mm
HYDRAULIC PROPERTIES	
Water Permability (Vertical)	130 l/m ² s

Polystorm Soakaway Geotextile can be utilised in these SuDS techniques

TECHNIQUES													
Blue-Green roofs	Podium Decks	Trees	Sports Pitches	Cycle Paths	Permeable Paving (sub base & podium)	Bioretention & Rain Gardens	Attenuation Storage Tanks	Infiltration	Swales	Filter Drains	Detention Basins	Ponds & Wetlands	Filter Strips
								✓	✓	✓	✓		

Visit www.polypipe.com/greeninfrastructure

All descriptions and illustrations in this publication are intended for guidance only and shall not constitute a 'sale by description'. All dimensions and weights given are nominal and Polypipe may modify and change the information, products and specifications from time to time for a variety of reasons, without prior notice. The information in this publication is provided 'as is' Nov 2018. Updates will not be issued automatically. This information is not intended to have any legal effect, whether by way of advice, representation or warranty (express or implied). We accept no liability whatsoever (to the extent permitted by law) if you place any reliance on this publication you must do so at your own risk. All rights reserved. Copyright in this publication belongs to Polypipe and all such copyright may not be used, sold, copied or reproduced in whole or part in any manner in any media to any person without prior consent. © Polypipe is a registered trademark of Polypipe. All Polypipe products are protected by Design Right under CDPA 1988. Copyright © 2018 Polypipe. All rights reserved.