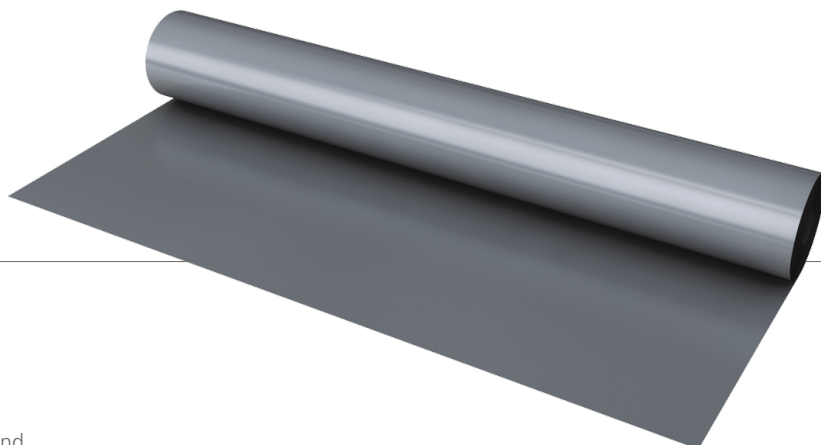


Geomembranes are impermeable liners used in sustainable drainage systems (SuDS) to encapsulate geocellular attenuation tanks. The membrane used must be robust and should be assessed based on the application, native soil and groundwater conditions.



Applications

Permavoid Geomembrane is ideally suited to attenuation tank encapsulations, voided sub-base installations, lake/pond liners and containment.

Key Benefits

- Heavy duty propylene/ethylene copolymer membrane
- Used to create a water-tight construction and minimise risk of subgrade softening
- Excellent flexibility
- High puncture resistance
- 100% recyclable

Performance

A robust, weldable, single layer, cold applied geomembrane produced from a resin formulation designed to provide quality geomembrane with excellent flexibility, and improved elasticity and resistance to puncture. These properties assure maximum multiaxial elongation to accommodate differential settlement.

ELEMENT	VALUE	TEST METHOD
PHYSICAL PROPERTIES		
Thickness mm	1.0	EN 1849-2
Density g/cm ³	0.91	ASTM D-792
Tensile strength at break MD MPa	24	EN ISO 527-1/3/5
Elongation at break MD %	900	EN ISO 527-1/3/5
Tensile strength at break TD MPa	19	EN ISO 527-1/3/5
Elongation at break TD %	900	EN ISO 527-1/3/5
Static puncture N	1100	EN ISO 12236
Tear resistance N	60	ISO 34-1b
Dimensional stability %	200	DIN 53377
Carbon black content	2-3%	ASTM D-4218
Core material	FPP	

Installation

For retention and attenuation applications where units need a sealed geomembrane to prevent the release of water and prevent the ingress of groundwater. Jointing should be formed using proprietary techniques such as fusion or extrusion bead welding. Double-sided tape may be used when specifically requested by the contractor. Advice on seam testing procedures is given in CIRIA SP 124:1996 (Barriers, liners and cover systems for containment and control of land contamination).

Technical Support

Detailed guidance and assistance is available.

For further information, please contact our Technical Team on **+44 (0) 1509 615 100** or email civils@polypipe.com or visit www.polypipe.com/civils-technical-hub

ROLL OPTIONS	
CODE & DESCRIPTION	DIMENSIONS
PV13001 Geomembrane Roll	1m x 100m
PV13007 Geomembrane Roll	2m x 100m
PV13008 Geomembrane Roll	3m x 100m
PV13009 Geomembrane Roll	4m x 100m
PV13010 Geomembrane Roll	6m x 100m
PV13011 Double Sided Tape	100mm x 15m
PV13012 Single Sided Tape	75mm x 50m

Permavoid Geomembrane can be utilised in these SuDS techniques

TECHNIQUES													
Blue-Green roofs	Podium Decks	Trees	Sports Pitches	Cycle Paths	Permeable Paving (sub base & podium)	Bioretention & Rain Gardens	Attenuation Storage Tanks	Infiltration	Swales	Filter Drains	Detention Basins	Ponds & Wetlands	Filter Strips
✓	✓	✓	✓	✓	✓	✓	✓	✓	✓	✓	✓	✓	✓

All descriptions and illustrations in this publication are intended for guidance only and shall not constitute a 'sale by description'. All dimensions and weights given are nominal and Polypipe may modify and change the information, products and specifications from time to time for a variety of reasons, without prior notice. The information in this publication is provided 'as is' on October 2021. Updates will not be issued automatically. This information is not intended to have any legal effect, whether by way of advice, representation or warranty (express or implied). We accept no liability whatsoever (to the extent permitted by law) if you place any reliance on this publication you must do so at your own risk. All rights reserved. Copyright in this publication belongs to Polypipe and all such copyright may not be used, sold, copied or reproduced in whole or part in any manner in any media to any person without prior consent. is a registered trademark of Polypipe. All Polypipe products are protected by Design Right under CDPA 1988. Copyright© 2019 Polypipe. All rights reserved.