

## Terrain Push-Fit drainage systems

The recently expanded, market-leading Terrain PVC Push-Fit system is renowned for quality, dependability and reliability in use. Designed for quick and easy jointing for both domestic and commercial applications.

Terrain Push-Fit can be installed simply and efficiently, saving time and money on site, while the addition of new products makes the Push-Fit system more versatile than ever before.

### Unique, New and Innovative products:



#### Single equal branch – variable boss

The 104E.412.92 Variable Boss Branch offers unrivalled installation flexibility – branch and boss pipe incorporated in a single adjustable fitting.

- Direct pipe connection (x2) for 50mm waste runs – no additional fitting required
- 3 boss connections
- Joint design assures vertical alignment during installation and operation
- Anti-tamper joint means that major product parts can no longer be separated



#### Double corner branch

The 106E.490.12 offers a compact corner branch with low level 50mm waste connections.

- Direct pipe connection (x2) for 50mm waste runs – no additional fitting required
- Moulded bracket guide



#### Universal Soil Manifold

The 119P.4.15 universal soil manifold offers up to 4 low level waste connections

- Assembled using mirror welding technology – providing a consistent, stronger and more durable weld
- The most compact four entry manifold available
- Terrain branded waste plugs, easily removable for installation flexibility



#### Large diameter push-fit soil range

Available in sizes of 200 and 250mm.

- Range of fittings include plain ended pipe, couplers, bends, branches, reducing branches, access fittings and reducers
- Reducing branches and reducers allow for easy connection of Terrain solvent weld and push-fit systems.

For more details see the September 2013 Terrain trade price list

---

## Push-Fit jointing of Terrain pipework & fittings

### Step 1



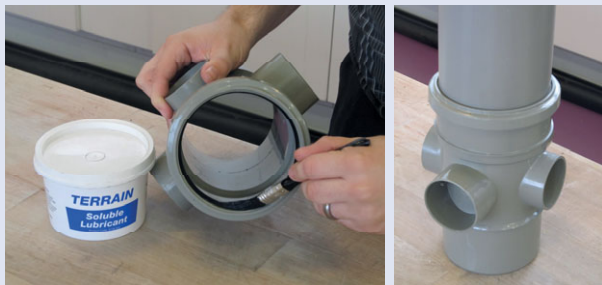
Cut the pipe square using a saw or pipe cutter and deburr the cut edge with a file.

### Step 2



Chamfer the edge of the pipe using a chamfering tool or file.

### Step 3



Lubricate the seal ring and insert pipe or fitting into the socket.

### Step 4



When inserting a length of pipe into a fitting it is important to control thermal movement. After the pipe has been fully inserted into the socket, mark the pipe and withdraw it by 12mm. Anchor the system correctly to create a fixed point.

For details of solvent weld joints refer to the Terrain Soil and Waste technical manual.