

Highways Solutions



The way ahead

The experience to inspire change

Polypipe has developed a range of solutions to help assist with the challenges that face the UK's road network.

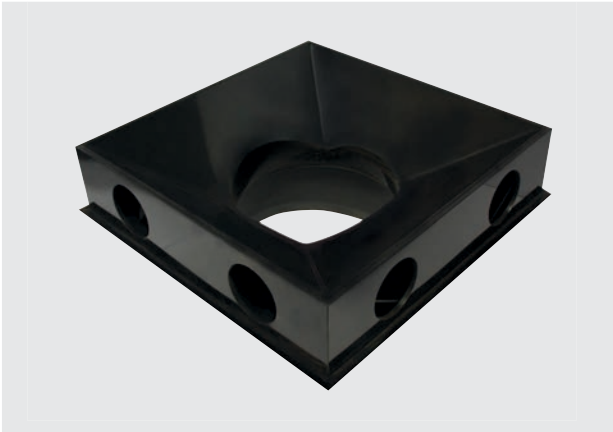
With higher volumes of traffic and increasing high-intensity rainfall events, flooding on our roads and motorways is an extremely important challenge that we need to face. Polypipe Civils and Green Urbanisation has a wealth of experience and solutions to capture surface water run-off, trap road surface oils and pollutants, store stormwater and discharge it at a controlled rate.



Our comprehensive ranges of surface water drainage and cable protection systems conform to Highways England specifications and meet the needs of highways projects.

We understand the need to install and maintain our highways with minimal disruption and our products are lighter in weight than traditional alternatives, making them easy to handle; speeding up installation time and reducing road or lane closures.





Ridgichute

Ridgichute, the new gully chute for use in highway applications, is designed to reduce high-risk maintenance activities on carriageways.

Ridgichute allows captured water and sediment from high-risk carriageways to pass straight through into our Ridgidrain drainage system, preventing surface flooding and moving maintenance activities to safer areas off the carriageway.



Polysewer & Ridgisewer

Our sewer systems are of durable, long-life plastic construction and are available in diameters of 150mm-900mm.

They're also quick and easy to fit, whilst being compatible with our chambers and delivered in lengths of up to 6m.



Ridgigully

Our high quality, light, easy-to-handle and install Ridgigully products are manufactured in durable HDPE.

Coupled with our Ridgidrain products, they make an exceptional collection and conveyance system for roadsides where flooding would ordinarily be a challenge.

Ridgidrain

Ridgidrain is the original twinwall surface drainage system in the UK with Highways Authority Product Approval Scheme (HAPAS) status.

We've expanded the Ridgidrain offering, adding two larger sizes to the range; 750mm and 900mm. Engineered to resist high traffic loads, Ridgidrain is available in 100mm to 900mm diameter sizes, compatible with our chambers and delivered in lengths of up to 6m.





Ridgistorm-XL

Thanks to its large diameter structure, Ridgistorm-XL's water storage and attenuation capabilities can be used to intercept and capture large volumes of stormwater run-off, and can be installed beneath motorways to alleviate flooding on the carriageway.

Ridgistorm-XL has gone through extensive product evaluation to be compliant with MCHW Volume 1 and Series 500 (Specification for Highway Works) (750-900mm), whilst 1050-3000mm can be approved through BD2/12 Technical Approval of Highway Structures process.



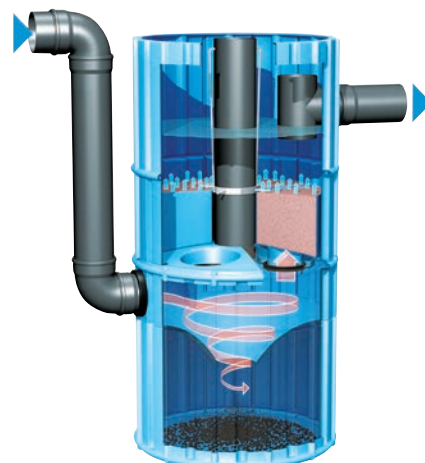
Chambers

Selecting from our four core chamber types – including RIDGISTORMAccess, RIDGISTORMCheck, RIDGISTORMControl and RIDGISTORMSeparate, each in diameters of up to 3000mm – the systems can be customised with a range of connections and ancillaries including steps, ladders, lifting points and safety features.

RIDGISTORMSeparate-X4

RIDGISTORMSeparate-X4 is a proprietary multi-process treatment system, used for the treatment of surface water run-off, providing high levels of contaminant removal, including hydrocarbons and heavy metals.

Four different processes include sedimentation, filtration, chemical separation and oil retention; delivering clean water back into the environment.





Permavoid and Polystorm

For multi-level capture, reuse, infiltration and attenuation, we offer high-quality Permavoid and Polystorm geocellular systems.

Engineered from high-strength polypropylene with high levels of recycled material content, the two ranges enable both shallow and deep installations of infiltration and attenuation structures. In particular, Permavoid is ideal for sub-base replacement schemes and our new Polystorm Deep unit is the only geocellular solution on the UK market suitable for excavations in excess of 8m deep.

Permatreat

Available with D400 and C250 grating options (with the latter offering both Standard and Easy Access), Permatreat is a versatile, linear treatment system that can provide source control and pollution treatment in a wide variety of locations and applications.

The Permatreat channel functions as a combined run-off collection system, whilst intercepting silt and oil from surface water run-off.





Cable Protection

Our tried and trusted range of engineered ducts provide maximum cable protection for the Highways, Rail, Lighting and Utilities sectors.

Manufactured from only the finest polymers, our cable protection products exhibit excellent impact resistance even at low temperatures and are extremely durable, whilst also being flexible, which can reduce the need for specialist bends. We offer a full range of cable protection BBA HAPAS approved systems, conforming to Highways England specifications, including Motorway Communications cable protection systems.



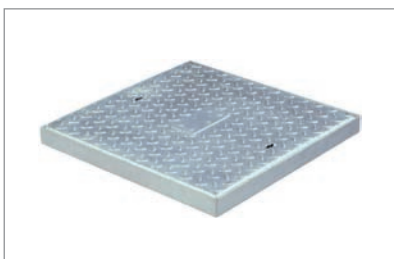
Power



Motorway communications



Lighting



Covers and frames



Access boxes



Pole boxes

Highways Solutions

The way ahead



Polypipe Civils and Green Urbanisation

Charnwood Business Park
North Road, Loughborough
Leicestershire

LE11 1LE

Tel +44 (0) 1509 615100

Email civils@polypipe.com

www.polypipe.com/civils



Printed on 100% recyclable chlorine-free paper. All inks used on this brochure are vegetable based.