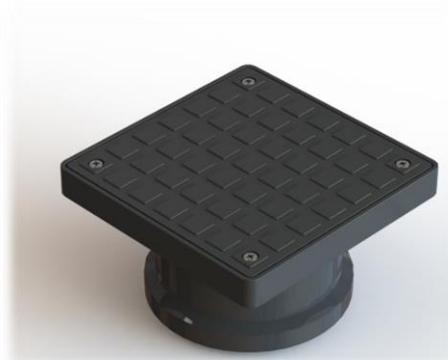


## PRODUCT INFORMATION

## ISSUE 1 - JUNE 2017

Product code: UG523

The Polypipe 90° Vertical Rodding Eye is used as an access point on a branch drain for rodding and testing. It can also be used in conjunction with a back drop manhole where blockages are a risk or in situations where an angled rodding eye would not be appropriate.



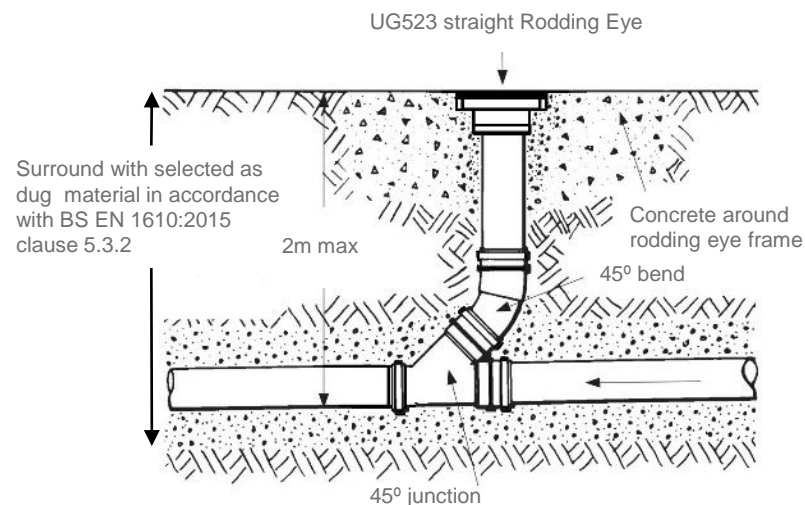
### Key Benefits

- Made from hard wearing, weather resistant black polypropylene, lightweight design for easy handling
- 15mm deep frame for installation in concrete, tarmac or block paving
- Rated at 15kN/1.5T for use in lightly loaded areas such as domestic gardens and footpaths when installed with a full concrete surround (see installation detail below)
- Anti-rock with four removable locking screws.
- Single seal with full depth 110mm ring seal socket to BS EN 1401
- Building Regulations Approved Document H compliant

### Building Regulations – Maximum Spacing of Access point

| From        | To Access fitting | To Junction | To Inspection chamber | To Manhole |
|-------------|-------------------|-------------|-----------------------|------------|
| Rodding Eye | 22m               | 22m         | 45m                   | 45m        |

### Typical Installation Detail



### Dimensions

