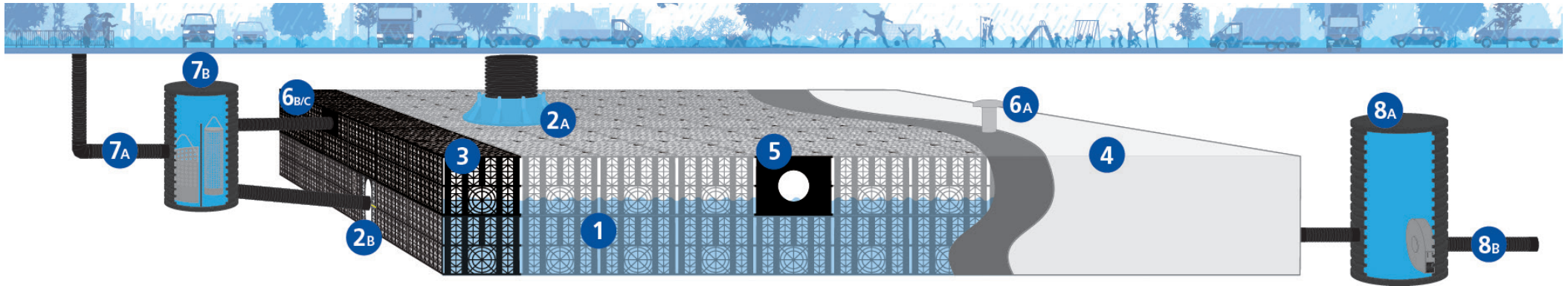
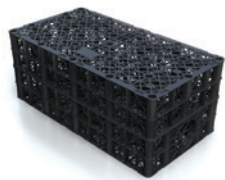


An 8 step guide to a total Polystorm system

Issue 02 | February 2017



1 Select modular cell



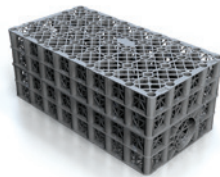
Polystorm Lite

Product code: PSM2

Compressive strength: 20 tonne/m²

Landscaped/pedestrian

Polystorm Lite has been specifically designed for non-trafficked, landscaped and pedestrian applications at lower depths.



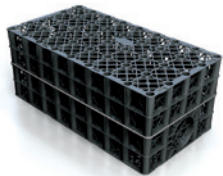
Polystorm

Product code: PSM1

Compressive strength: 44 tonne/m²

Trafficked

The original Polystorm cell made of virgin material for trafficked and loaded applications at greater depths.



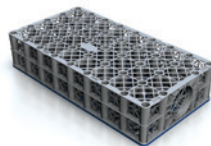
Polystorm-R

Product code: PSM1A

Compressive strength: 61 tonne/m²

Trafficked

The standard Polystorm cell for trafficked and loaded applications at greater depths has the added benefits of a higher recycled material content.



Polystorm Xtra

Product code: PSM3

Compressive strength: 83 tonne/m²

Heavy trafficked, deep or reduced cover

Designed for use in deeper burial depths for heavily trafficked applications making it suitable for use in very heavily trafficked areas, deep applications and where reduced cover is required.

2 Select access if maintenance and inspection is required

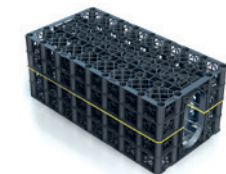
2A



Polystorm Access

Polystorm Access provides a 1m x 0.5m vertical shaft within a Polystorm geocellular structure to enable surface access for remote camera inspection and maintenance activities such as flushing and rodding.

2B



Polystorm Inspect

Polystorm Inspect provides a tunnel along the length of a fully installed Polystorm system to enable horizontal access for inspection and maintenance. It can also be used in conjunction with Polystorm Access.

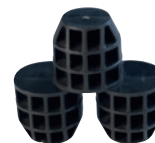
Connection accessories



- Shear Connectors
Product code: PSMSC



- Clips
Product code: PSMCLIP



- Brick Bond Connectors
Product code: PSMBBSC

3 Select if treatment is required

Permavoid Medium Duty with Biomat

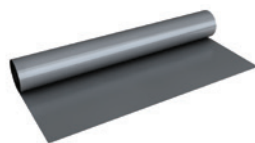
Product code: PSM1BM

Comprising of a high strength, low density, oil treating geosynthetic floating mat for use with the Polystorm range of modular geocellular units.

For multi-stage oil interception the Permavoid Medium Duty with Biomat can be used in conjunction with Permachannel (linear treatment) or a pre-fabricated RIDGISTORM Separate Weir and Baffle Chamber (point treatment).



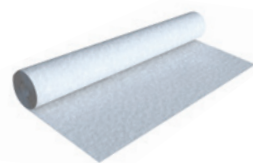
4 Select wrap



Geomembrane for retention & attenuation

Product Code: PV13010

An impermeable membrane for wrapping around geocellular structures to form watertight tanks. This is then wrapped in a geotextile which protects the geomembrane during installation.



Permatex 300 for infiltration or protection

Product code: PV23006

A non-woven protective geotextile that can be used for soakaway infiltration solutions or to wrap a geocellular tank before a geomembrane is installed for added protection.



Permafilter Geotextile for infiltration

Product code: PV23002

This geotextile has been specifically designed to remove hydrocarbon pollution, treating the captured water before infiltrating it into the ground for treatment and infiltration.



Polypipe Soakaway Geotextile

Product code: PVT51000

Polypipe Soakaway Geotextile is a UV stabilized, polypropylene geotextile, designed to complement our existing Polystorm geocellular system.



Polypipe Heavy Duty Soakaway Geotextile

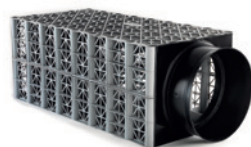
Product code: PVT52000
Polypipe HD Soakaway Geotextile is a heavy duty, UV stabilized, polypropylene geotextile, designed to complement our existing Polystorm geocellular system.

5 Pipe Connections

A flange adaptor is attached at both the inlet and outlet points to allow water to enter and exit the tank via connecting pipes.



Flange Adaptor to EN1401



Polystorm Cell with Drainage Flange Connection

- 5a. Polystorm cells with Flange Connections to Ridgidrain drainage pipes: PSMCRD225 (225mm), PSMCRD300 (300mm), PSMCRD375 (375mm)
- 5b. Polystorm Inspect cells with Flange Connections to Ridgidrain drainage pipes: PSM4CRD225 (225mm), PSMCRD300 (300mm)
- 5c* Flange Adaptor to EN1401: PSMFA110 (110mm), PSMFA160 (160mm)
- 5d* Flange Adaptor to Ridgidrain: PSMFA150 (150mm), PSMFA225 (225mm), PSMFA300 (300mm), PSMFA375 (375mm), PSMFA450 (450mm), PSMFA600 (600mm)

* Note: If PSM flanges PSMFA110-600 are used for lateral connections on to the side of a PSM tank, then Head loss will occur due to the lattice structure of a PSM unit (circa 48% void). This should be considered during hydraulic calculations.

6 Venting

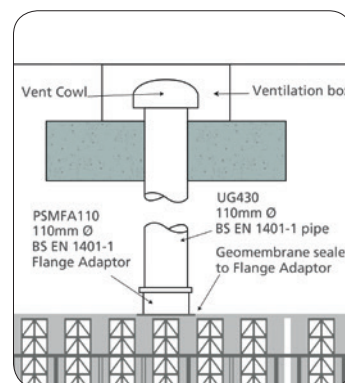
Every attenuation tank requires at least one vent to maximise hydraulic performance, reduce stress on encapsulating geomembranes and avoid stagnant water. This can be done by installing either a Vent Cowl or a connection pipe to vent air directly into an upstream chamber.

6A

Vent Cowl

Product code: SCV40

To vent air above ground.



6B

BS EN1401-1 pipe

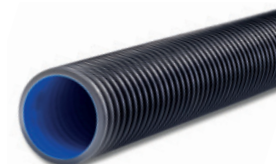
Product code: UG430
Joint to tank PSMFA110 with UG430.



6c

150mm Ridgidrain pipe

Product code: RD150X6PE
For ventilation into the upstream chamber. Joint to tank PSMFA150 with RD150X6PE.

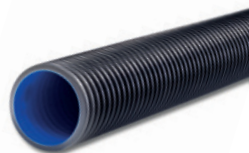


7 Associated upstream products

7A

Ridgidrain

Ridgidrain can be utilised within a Polystorm system by allowing captured surface water to enter the attenuation or infiltration tank.



7B

RIDGISTORMSeparate Chambers

RIDGISTORMSeparate Chambers are self-cleaning and prevent the ingress of debris, silt, organic and even other particles into the Polystorm structure, extending its useful life.

Silt Traps

Small diameter
(320-460mm)

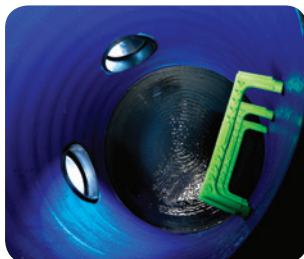
Silt traps are available from the RIDGISTORMSeparate Silt Traps range.



Catchpits

Larger diameter
(450-3000mm)

Catchpits are available from the RIDGISTORMSeparate range.



Filter Chambers

Large diameter
(500-3000mm)

In addition to silt traps and catchpits, we also offer RIDGISTORMSeparate Filter Chambers with additional treatment features.



8 Associated downstream products

8A

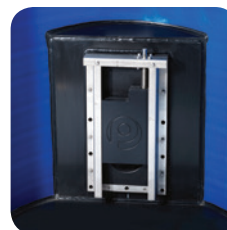
RIDGISTORMCheck

A choice of Vortex or Orifice Plate Flow Control Chambers for precise control of site discharge rates.



RIDGISTORMControl

Pre-fabricated structured wall chambers which feature 'in-line' system components such as penstocks, gate valves or flap valves to control system flows and facilitate maintenance.



Penstock



Gate valve

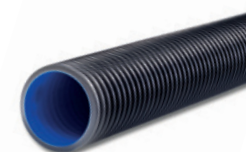


Flap valve

8B

Ridgidrain

Ridgidrain can be utilised to drain away stored water from a Polystorm attenuation tank.



For full datasheets of products in the Polystorm system, please visit our website www.polypipe.com/toolbox