

# TERRAIN

Technical Bulletin No.1 (2014)

---

## Terrain Fabrication Service

In 1964 Polypipe Terrain became the first manufacturer of PVC drainage products and latterly, pioneered production in the UK of other plastic materials for drainage such as HDPE.

All these materials lend themselves to being assembled in the factory due to their lightweight nature before being transported to site for simple installation. From complete drainage stacks to truly bespoke problem solving fittings, Terrain's Fabrication Service has delivered many benefits to the construction market for over 40 years, such benefits include reduced risk and savings on materials and labour.

### Reduced Risk

As a result of the strict quality controls in place within our factory environment, Terrain can significantly reduce the risk of product failure and defects which could arise from the use of inexperienced labour. Particularly for high-rise developments, Terrain engage early in the development to develop a single stack design to suit all risers across the project which will reduce the risk of scheduling complications and supply issues.

By capping off the connections into the stack and air testing during the manufacturing process, reductions in first fix testing time are possible and this offers protection against the ingress of site debris. The fabrication of soil stacks will reduce the number of contractors required on site and help to alleviate congestion, furthermore a scheduled call off of stacks will reduce the risk of theft from site. The use of fabricated stacks and unique problem solving fabricated fittings will also deliver benefits to site health and safety.

### Problem solving

As well as delivering fabricated drainage stacks the Terrain Fabrication Service can also assist customers with difficult installations. The design and manufacturing team at Terrain can work with customers to deliver truly unique fittings to overcome major problems where building designs do not meet the reality of installation. One such instance was a problem faced by a Terrain customer installing the drainage system at a major sporting facility in the Midlands.

On this occasion the Terrain Fabrication team designed and manufactured a bespoke fitting to enable connections to be made from bathroom pods to already installed and cemented in manifolds. Without this bespoke fitting the only option would have been to remove the manifolds and reinstall the system.

### Savings on Materials and Labour

According to Constructing Excellence, in relation to overall timescale and project management, fabrication relieves congestion and concurrent working from site. This helps to reduce the time required for installation, site testing and commissioning. A number of contractors using the Terrain Fabrication Service have reported savings of up to 30% on installation and testing when compared to traditional installation methods and materials.

The fabricated off site drainage stack offers clearer visibility and control of the costs of material and labour required to manufacture when compared to traditional methods of procurement and assembly.

Additionally, the use of fabricated stacks and bespoke fabricated fittings can significantly reduce the waste generated on site.

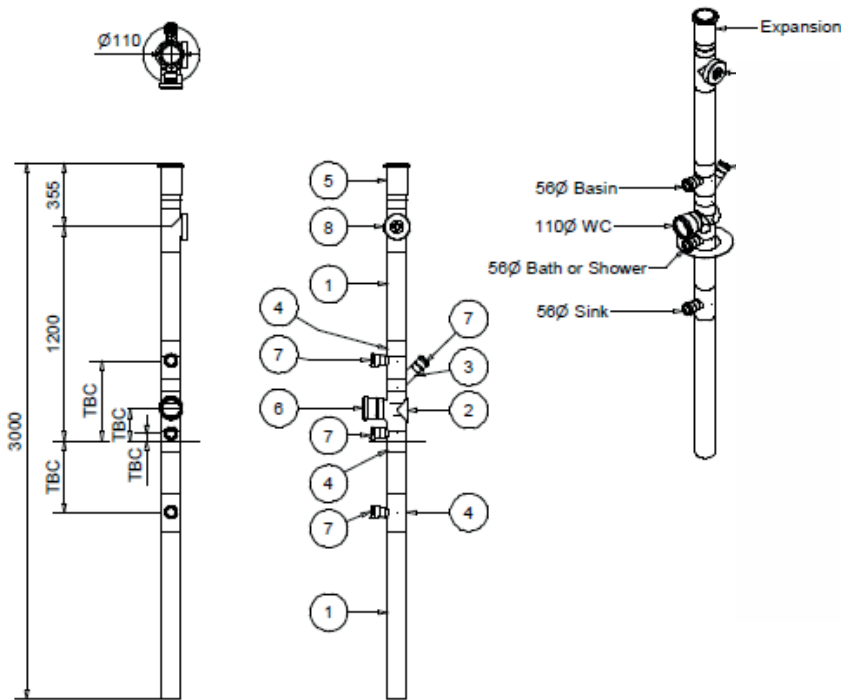
# TERRAIN

Technical Bulletin No.1 (2014)

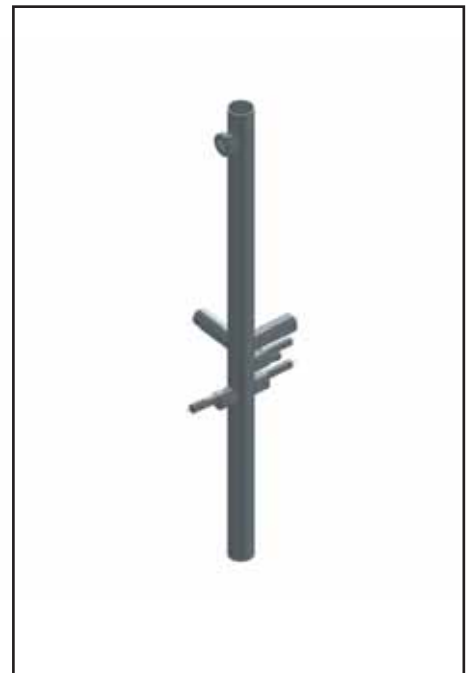
## Terrain Fabrication service

In addition to the benefits detailed above, the Terrain Fabrication Service will also deliver an experienced design and fabrication team with a can do attitude, "if you can draw it, we can make it". To maximise the benefits from the Terrain Fabrication service, the following process is in place:

**Image 1: First draft fabricated drainage stack drawing for client approval.**



**Image 2: 3D image of fabricated drainage stack**



### Terrain Fabrication service process

1. Enquiry received
2. Terrain technical team generate a draft proposal for customer approval
3. Client amendments implemented
4. Design signed off
5. Order placed
6. Product manufactured
7. Product dispatched

**Image 3: Factory assembled**



Images 1, 2, and 3 illustrate elements of the Fabrication service

# TERRAIN

Technical Bulletin No.1 (2014)

---

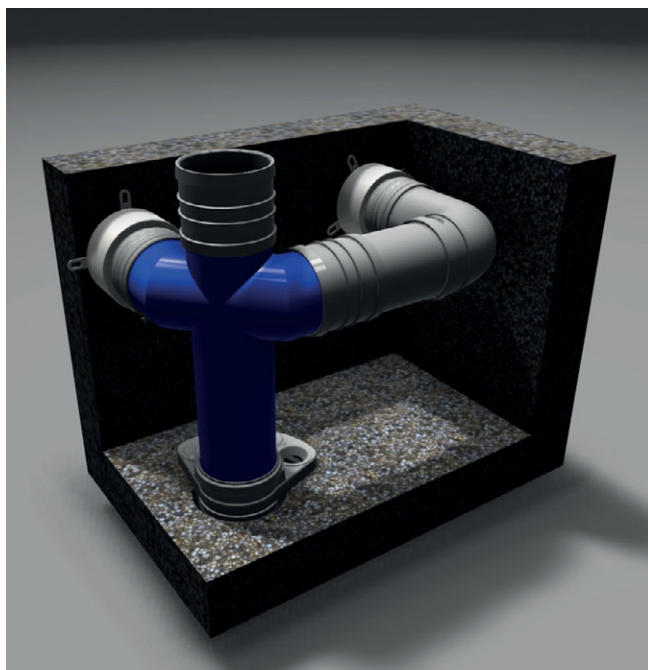
## Terrain Fabrication service

These simple process steps will provide installers and end users a range of products that can be trusted for quality and designed to provide optimum performance once installed, in addition to the benefits previously listed. Key to the success of the Terrain Fabrication department is customer satisfaction, achieved by working closely from design through to delivery against the client's schedule.

As a result of this customer focus, the Terrain Fabrication department have delivered standard drainage stacks, bespoke drainage stacks and truly bespoke drainage fittings to some of the UK's most iconic buildings including:

- The Gherkin
- The Walkie Talkie
- St George's Park (Burton upon Trent)

**Image 4: 3D image of bespoke problem solving fabricated fitting**



**Image 5: Bespoke fabricated fitting in situ**



If you believe that your project could benefit from the Terrain Fabrication service and would like to find out more please email me at:  
[steve.bishop@polypipe.com](mailto:steve.bishop@polypipe.com)