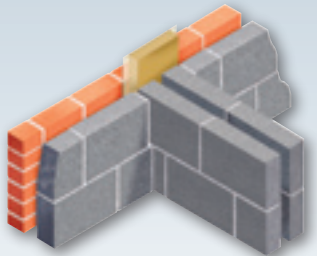
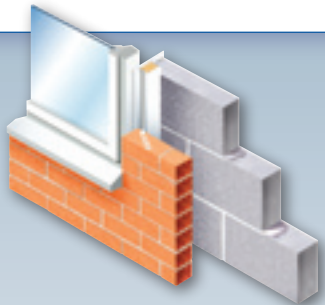
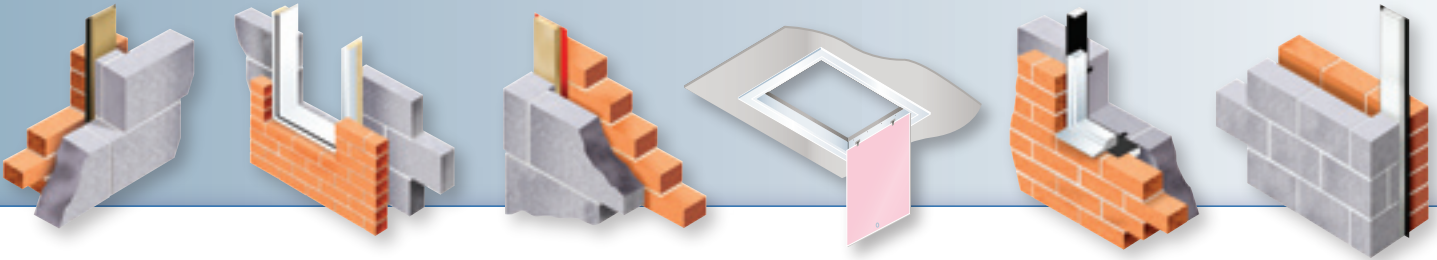


Polypipe TDI

A comprehensive range of products designed to provide complete and economical solutions to cold bridging and other insulation problems.





Welcome to Polypipe TDI

2

Polypipe TDI manufactures a full range of Insulated DPC's and Thermal Insulation Systems designed to meet today's increasing thermal and acoustic requirements in construction. Polypipe TDI's specialist knowledge ensures that its products comply with all necessary current Building Regulations.

Polypipe TDI have always lead the way in manufacturing quality products to meet with the ever changing Building Regulations and, where required, thoroughly tested for Fire Integrity by Warrington Fire Research.

"We pride ourselves on being up to date, and in many cases ahead of, Building Regulations and the Fire Regulations throughout the United Kingdom."

Flexibility is essential to the products and services we offer. Polypipe TDI can provide the specialist knowledge and the manufacture of "bespoke" products within both the Building Regulations and the Fire Regulations criteria.



3

The product range includes

- Non-Combustible Insulated Cavity Closers
- Non-Combustible Insulated DPC's
- Non-Combustible Insulated Cavity Barriers
- Insulated Cavity Closer Sub Frame Kits
- Wall Cavity Closers, Damp Proofing and Insulation
- Insulated DPC's
- Fire Resistant and Insulated Lofthatches
- Flooring Sound Reducing Strips

Polypipe TDI Product Selector

Closed Cavity

Inner Blockwork returned into Cavity

Damcor

Pages 6-7

Open Cavity

Straight build - Brickwork and Inner Blockwork

Multicor

Pages 12-13

Thermocor

Pages 14-15

Policor

Pages 16-17

Party Wall Cavity

More than one Cavity required to be closed

Loft Hatches

TDI 0.35 Loft Hatch

Pages 34-35

TDI 0.25 Loft Hatch

Pages 36-37

Flooring Products

TDI Floor Muffle

Pages 40-41

Fire Retardent Requirement

Stonecor

Pages 8-9



Pyroflex

Pages 10-11



Weathercor/F

Pages 18-21



Rigidcor/F

Pages 22-23



Hycor System 3000/F

Pages 24-25



TDI Firestop

Pages 26-27



Pyrocor

Pages 28-29



TDI Cavity Stop

Pages 30-31



Pyroflex

Pages 10-11



Cavity Sock

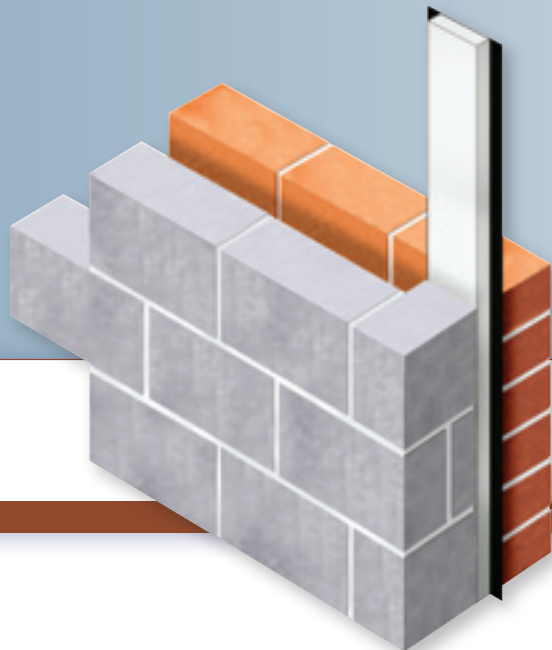
Pages 32-33



TDI Pyrohatch

Pages 38-39





Properties

- Supplied in 6 metre rolls
- No special fixings in use. No special installation techniques
- Easy to build as brickwork proceeds
- Easily cut with trowel or knife
- Lengths may be lapped with no loss of thermal efficiency

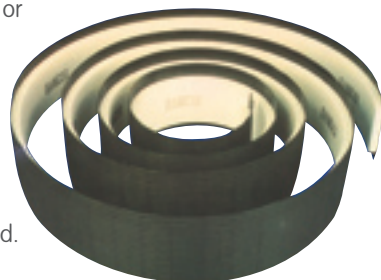


6

7

A complete and simple solution to thermal bridging where the cavity is closed. Combining advantages of expanded Polystyrene and Polyethylene DPC, Damcor is designed to prevent the problem of cold bridging around window and door openings in traditional cavity constructions. At these points in the structure, condensation with possible consequential staining and mould growth, can occur at the reveals due to the lack of insulation where the cavity is closed.

The product is simply placed in the cavity with the DPC overlap trapped between the window/door frame and the exterior brickwork. No special fixings or installation techniques are necessary. The product can be rolled or folded. It is easily cut with a knife or trowel, and can be lap-jointed with no loss of thermal efficiency. No material need ever be wasted.



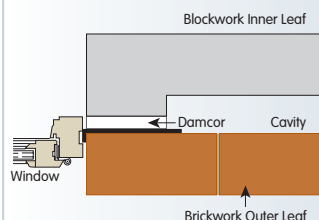
Product Details

Expanded Polystyrene to BS:3837:1986. Polyethylene DPC to BS 6515. Supplied in 6 metre rolls. 165mm DPC x 100mm insulation (8 per pack) 225mm DPC x 150mm insulation (6 per pack).

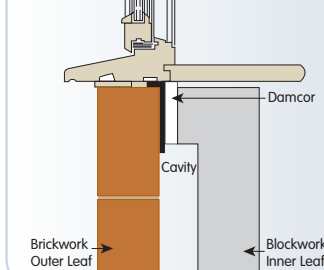
Damcor can be manufactured to special order with DPC widths up to 800mm.

Damcor is positioned in cavity prior to installation of window frame. It can be built in as the brickwork proceeds. Where lap joints occur, a minimum of 100mm DPC is recommended, with EPS insulation strips tightly butted.

Plan



Sections



Properties

- 'r' Value of 0.76m² °C/W
- 'k' or 'λ' Value of 0.033W/m °C
- Flexible, is supplied in rolls
- Easy to build as brickwork proceeds
- Easily cut with trowel or knife
- Light and robust
- Economical
- CFC and HFC free
- Also suitable for use with wooden window frames



8

9

Multi purpose super flexible compressible mineral wool insulated DPC combining the advantages of Icelandic lava stone wool with a traditional DPC. Stonecor meets today's thermal and acoustic requirements in construction. Icerock is manufactured in Iceland and completely environmentally friendly in manufacture and use, and is also non-combustible to 700°C. The Polyethylene DPC is manufactured to BS6515.

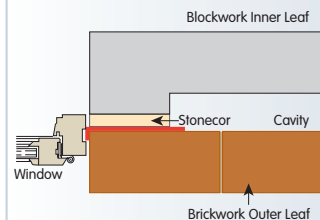
Supplied in 10 Metre Rolls 5 Per Pack. 165mm DPC x 100mm insulation 225mm DPC x 150mm insulation.

Stonecor can also be manufactured to special order with DPC widths up to 800mm.

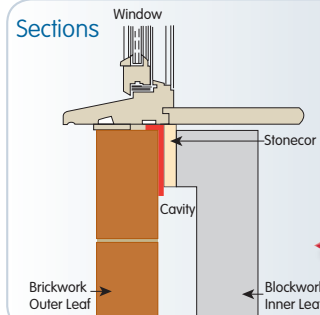
Installation/site work

Stonecor is simply and easily installed. Its flexibility enables it to be built in with no problems as brickwork proceeds, similar to traditional DPC's. It must be firmly built in as work proceeds with the blockwork and the Icerock tightly butted together. Where a joint occurs a minimum lap of 100mm of DPC is recommended.

Plan



Sections





10

A complete and simple solution to thermal bridging for reveals and party wall situations. Combining the advantages of non-combustible insulation and high performance DPC.

For installation in properties of three stories or above and multi-occupancy developments.

Flexible high performance DPC bonded with a non-combustible insulation achieving 120 minutes fire integrity.

Manufactured in rolls in widths from 165mm to 800mm DPC, suitable for reveals and party wall situations achieving two hours fire integrity and required acoustic levels.

Easy to build as brickwork proceeds, can be cut with knife, light and robust.

Affording excellent insulating performances with thermal stability and low heat storage with high resistance to thermal shock.

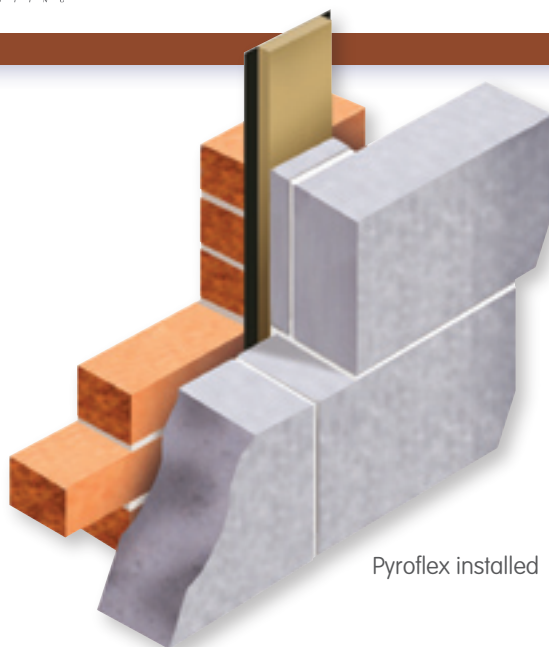
Pyroflex has good sound absorption, flexible and resilient with good resistance to tearing, Pyroflex is free of binder or lubricant.

Properties

- Complies to all Building Regulations and Thermal Resistance Part L1 & L2
- CFC and HFC free
- 'r' value at 25mm is 0.73
- 'k' or 'λ' value at 200°C is 0.06
- 'k' or 'λ' value at 600°C is 0.16
- Thermal conductivity of 128 kg/m³ density measured at 20 Deg C to BS 874: 0.0342 W/MK



11



Pyroflex installed

Multicor®

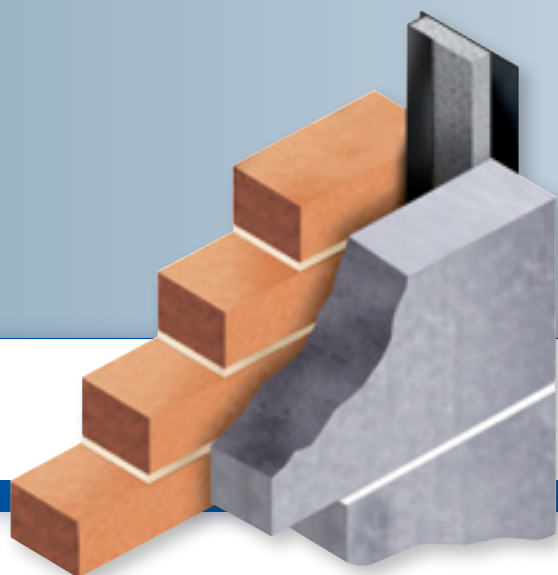
Insulated Cavity Closer

Polypipe TDI

Properties

- 'r' value of 1m² kw
- 'k' value of 0.03w/m
- Complies with Building Regulations Part L1a
- Manufactured in 2.44 metre lengths
- Fits all cavity widths up to 100mm wide
- Suitable for any window size, one size fits all
- Complete with flexible weatherseal
- Corners and brick ties now available

12



TDI Multicor is an insulated cavity closer that is suitable for use in severe weather conditions.

One size fits all - can be cut to fit any window size.

The TDI Multicor insulated cavity closer is manufactured from high quality PVCu and comes complete with flexible weatherseal and fits all cavity widths up to 100mm wide, one size fits all.

Very competitively priced Multicor can be built in at construction stage or retro fit, there are no clips required with Multicor cavity closer, simply nail to brickwork.

Multicor is designed to be suitable for use with both PVCu and wooden frames.

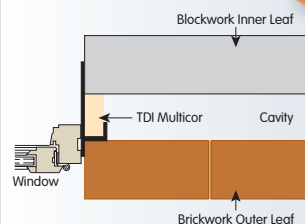
Now available with corners and brick ties for superior fixing.

Simple to cut -
one size fits all

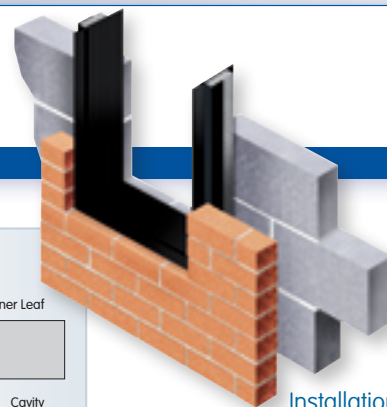


13

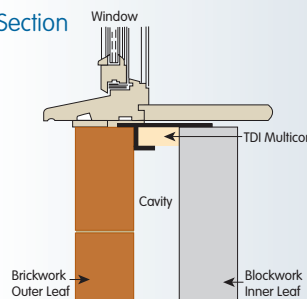
Diagram



Installation



Section



Thermocor CC®

Insulated Cavity Closer

Polypipe TDI

Properties

- Excludes damp
- Eliminates the cold bridge
- No special installation techniques
- Easily cut with a knife
- Very economical in use and price



14

Thermocor CC is manufactured from an expanded Polystyrene core completely enclosed in Polyethylene DPC for maximum protection against water penetration coupled with insulation.

Standard sizes 50, 65, 75, 90, 100 & 125 mm.

2.44 metre length, in packs of 20.

Can be manufactured up to 200mm wide.

TDI plastic fixing clips are available if required.

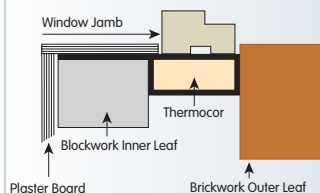
Installation/site work

An overlap of the DPC allows Thermocor CC to be fixed to the frame if required. Expanded Polystyrene is CFC and HFC free to BS3837.

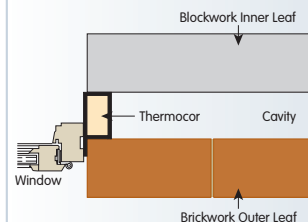
Thermocor CC can either be fixed as building progresses or placed in the cavity later. Where window frames are built in Thermocor CC should be fastened to window jamb in the appropriate position first. Window must be fixed directly to the masonry and set in at least 30mm from the inner surface of the outer leaf of the wall.

15

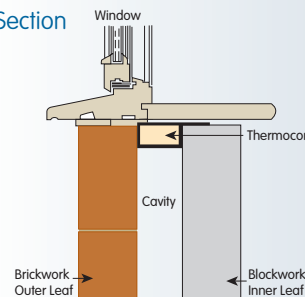
Diagram



Section



Section



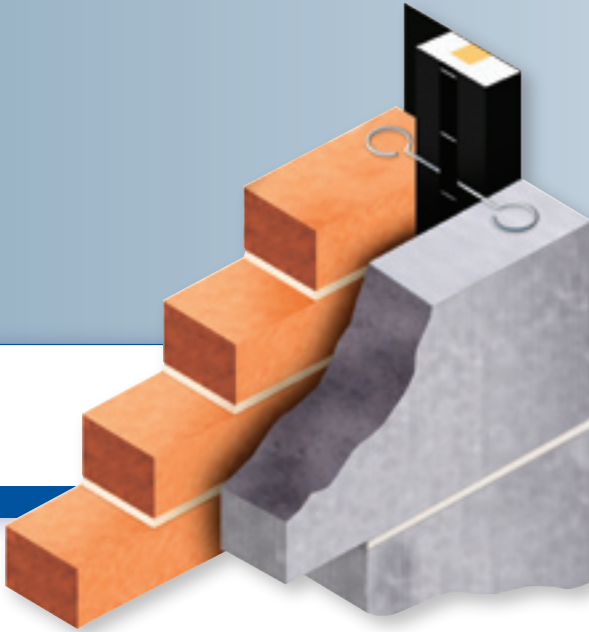
Policor CC®

Insulated Cavity Closer

Polypipe TDI

Properties

- Eliminates cold bridging
- No special fitting required
- Economical in use and price
- Energy efficient
- CFC and HFC free
- Traditional DPC



16

A complete and simple solution to closing and insulating the cavity in external wall openings. Combines the advantages of Polystyrene and Polyethylene DPC, plus a timber core.

Specially formulated to provide a simple, complete and economical solution to cold bridging problems. It consists of a pliable Polystyrene to BS 3837 and Polyethylene DPC to BS 6515 with an exterior grade timber insert.

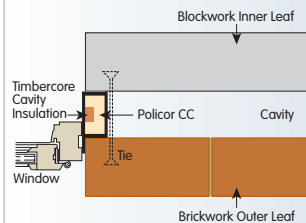
Stainless steel wall ties are provided with provision for adjustable spacing, ensuring that Policor is held firmly in position. The wall tie retaining strip will accommodate most types of wall ties.

17

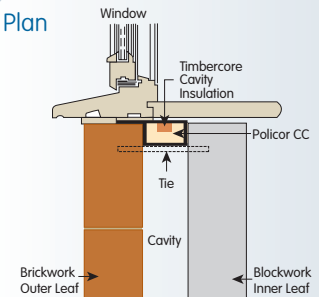
The timber core receives traditional fixings and it is recommended that plaster board or beading be nailed to the core and also fixed to the inner blockwork and then plastered over, thus eliminating any risk of the plaster cracking in the reveal. As well as being robust, Policor CC is pliable and can be pushed or built into irregular cavities without any danger of it being cracked or damaged.

Available in 50, 65, 75 & 100mm wide, in 2.44 metre lengths with 15 lengths per pack.

Section



Plan



Weathercor/F®

Insulated Cavity Closer



Polypipe TDI

Properties

- 'r' Value of 0.91m² °C/W
- 'k' or 'λ' Value of 0.033W/m °C
- Complete with flexible weatherseal
- Available for all cavity widths up to 240mm wide
- Very competitively priced
- Cuts installation time by 80% approx.
- Build in at construction stage
- No clips required, simply nail to brickwork
- Made from high quality PVCu
- Suitable for use with wooden frames
- Corners and brick ties now available



18

19

Weathercor/F is manufactured from non-combustible insulation in a PVCu profile incorporating a neoprene weatherstrip.

It has a 30 minute fire integrity, is suitable for severe weather condition areas. It is supplied in 2.44 metre lengths and in packs of 10. Cavity widths are available from 50mm to 240mm.

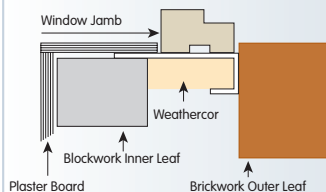
Can be manufactured to suit step reveal applications.

Now available with corners and brick ties for superior fixing.

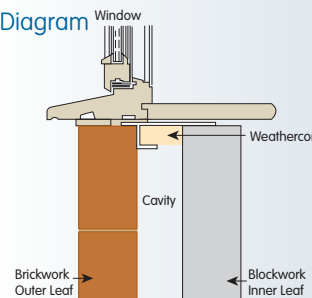


Weathercor/F installed

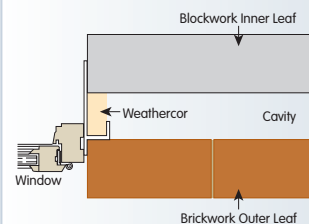
Section



Diagram



Section





Properties

- 'r' Value of 0.91m² °C/W
- 'k' or 'λ' Value of 0.033W/m °C
- Complete with flexible weatherseal
- Very competitively priced
- Cuts installation time by 80% approx.
- Build in at construction stage
- No clips required, simply nail to brickwork
- Made from high quality PVCu
- Suitable for use with wooden frames



20

21

Weathercor/F is manufactured from non-combustible insulation in a PVCu profile incorporating a neoprene weatherstrip.

It has a 30 minute fire integrity, is suitable for severe weather condition areas. It is supplied in 2.44 metre lengths and in packs of 10. Cavity widths are available from 50mm to 100mm.

Supplied in kit form cut to size complete with corners, bracing and brick ties.

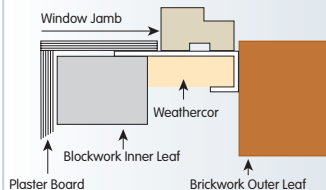
Ready to install as a sub frame kit that can be built around.

Can be manufactured to suit step reveal applications.

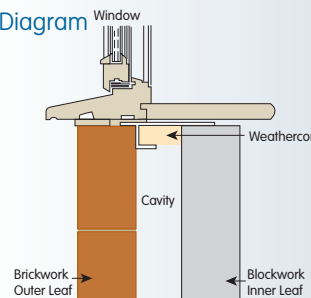


Weathercor/F installed

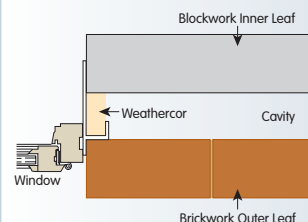
Section



Diagram



Section





Properties

- 'r' Value of 0.91m² °C/W
- 'k' or 'λ' Value of 0.033W/m °C
- Available in 5 sizes 50mm, 75mm, 85mm, 100mm and 120mm in 3 metre lengths
- Cuts installation time by 80% approx
- Build in at construction stage
- Minimum thermal resistance to Part L1 & L2
- Conforms to building regulations
- Very competitively priced
- Suitable for any sill options
- Complete with flexible weatherseal



Insulated cavity closer/cavity barrier which achieves a minimum of 30 minutes fire integrity and is suitable for severe weather condition areas, all in one product.

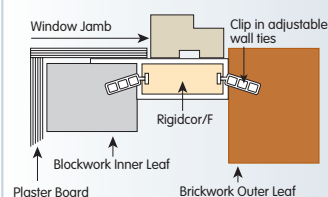
Made from high quality PVCu with corners, joining pieces and clip in adjustable wall ties available to eliminate all waste. Accepts any size or style of window system and does not require dry lining or plaster to conform to building regulations.

Supplied in 3 metre lengths, 5 per pack.
Cavity sizes 50mm, 75mm, 85mm, 100mm and 120mm.

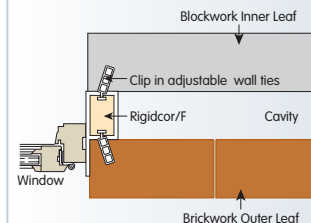
Available in 6 metre lengths to special order.

Can be manufactured to suit step reveal applications.

Diagram



Section



Hycor System 3000/F[®]

Subframe System



Properties

- 'r' Value of 0.91m² °C/W
- 'k' or 'λ' Value of 0.033W/m °C
- Available in 5 sizes 50mm, 75mm, 85mm, 100mm and 120mm
- Cuts installation time by 80% approx
- Build in at construction stage
- Minimum thermal resistance to Part L1 & L2
- Conforms to building regulations
- Very competitively priced
- Suitable for any sill options
- Complete with flexible weatherseal



24

25

Insulated cavity closer/cavity barrier which achieves a minimum of 30 minutes fire integrity and is suitable for severe weather condition areas, all in one product.

Made from high quality PVCu with corners, joining pieces and clip in adjustable wall ties available to eliminate all waste. Accepts any size or style of window system and does not require dry lining or plaster to conform to Building Regulations

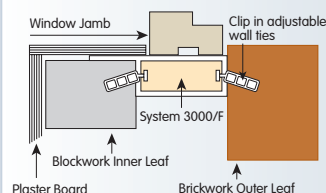
We supply in kit form cut to size and ready to install as a sub frame that can then be built around.

Cavity sizes 50mm, 75mm, 85mm, 100mm and 120mm.

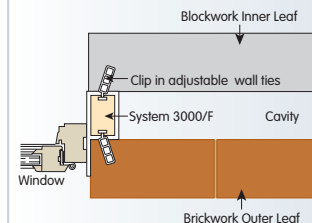
Can be manufactured to suit step reveal applications.



Diagram



Section



TDI Firestop®

Insulated Cavity Closer

Polypipe TDI



Properties

- 'r' Value of 1.36m² °C/W
- 'k' Value of 0.033W/m °C
- Damp proofs
- Insulates
- Fire stops
- Ideal for timber framed buildings
- Eliminates the cold bridge
- No special installation techniques
- Easily cut with a knife
- incorporates Polyethylene DPC to British Standard BS6515



26

27

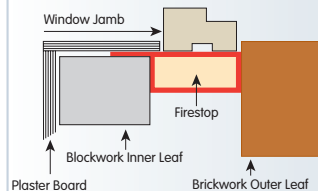
Manufactured from a non-combustible ice rock mineral wool core completely enclosed in Polyethylene DPC for maximum protection against water penetration coupled with maximum insulation.

TDI Firestop is a non-combustible, ice rock mineral wool core fully enclosed in a traditional DPC to ensure complete damp-proofing and insulation, plus a 40mm weather flap.

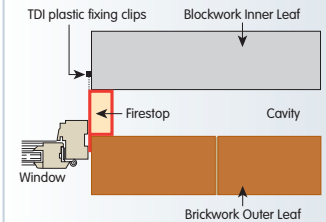
Available in 2.44 metre lengths in any width from 50mm to 200mm wide. Standard widths are 50mm, 65mm, 75mm, 90mm, 100mm, 125mm, 20 lengths per pack.

Fixing clips included.

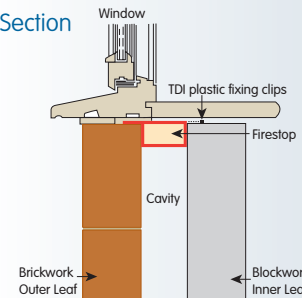
Diagram



Section



Section



Flexible Firebreak Insulated Cavity Closer



Properties

- Complies to all building regulations and thermal resistance Part L1 & L2
- 'r' value is 1.46
- 'k' or 'λ' value at 200°C is 0.06
- 'k' or 'λ' value at 600°C is 0.16
- Thermal Conductivity of 128 kg/m³ density measured at 20 Deg C to BS 874: 0.0342 W/MK
- Can be used as a horizontal and a vertical cavity barrier.



A complete and simple solution to thermal bridging combining advantages of non-combustible insulation and high performance DPC.

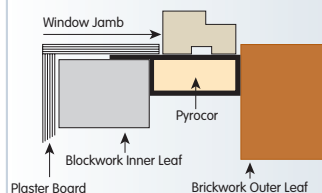
For installation in properties of three stories or above and multi-occupancy developments.

Pyrocor Cavity Closer is enclosed in a high performance Polymeric DPC suitable for all properties where two hours fire integrity is recommended.

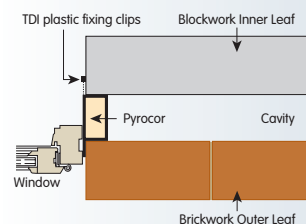
Pyrocor damp proofs, insulates, firestops and eliminates the cold bridge and is available in all cavity widths, supplied in 2.44 metre lengths with fixing clips, it can easily be cut with a knife and there are no special installation techniques.

Pyrocor can be used as both a horizontal and vertical cavity barrier.

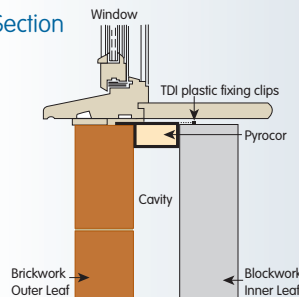
Diagram



Section



Section



TDI Cavity Stop®

Insulated Cavity Closer



Polypipe TDI

Properties

- 'r' Value of 0.76m² °C/W on 100mm width insulation
- 'r' Value of 0.56m² °C/W on 150mm width insulation
- 'k' or 'λ' value of 0.033W/m °C
- Flexible, is supplied in rolls
- Easy to build as brickwork proceeds
- Easily cut with a knife
- Light and Robust
- Economical



30

31

60 minutes fire integrity and acoustic insulated DPC for partywalls.

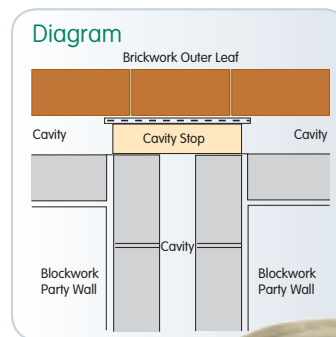
A super flexible and compressible insulated DPC combining the advantages of Icelandic Lava Stone Wool with a traditional DPC complying to all acoustic requirements for party walls and abutments giving 60 minutes fire integrity.

Cavity Stop meets today's thermal and acoustic requirements in construction. Icerock is manufactured in Iceland, it is completely environmentally friendly in manufacture and use, and is also non-combustible. The Polyethylene DPC is manufactured to BS6515.

Manufactured in DPC widths from 165mm to 500mm and in insulation widths from 100mm to 450mm insulation thickness from 50mm to 125mm 7.5metre rolls 5 rolls per pack.

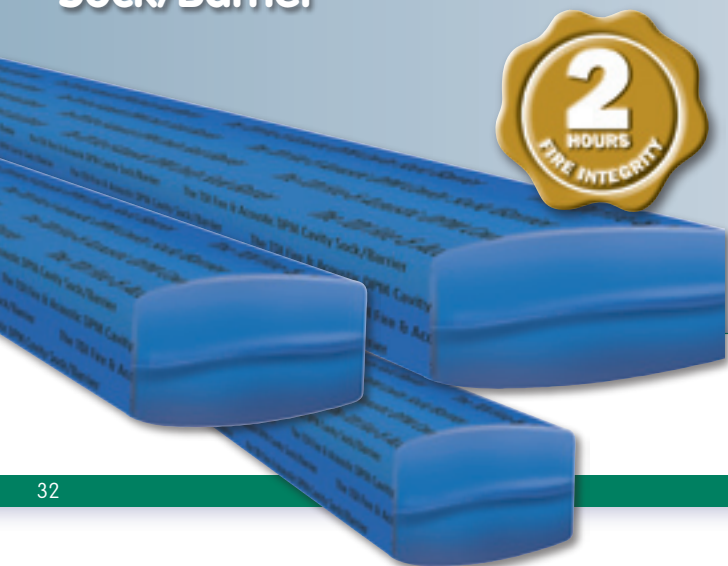
Installation/site work

Cavity Stop is simply and easily installed. Its flexibility enables it to be built in with no problems as brickwork proceeds, similar to traditional DPC's. It must be firmly built in as work proceeds with the blockwork and the Icerock tightly butted together. Where a joint occurs a minimum lap of 100mm of DPC is recommended.



Cavity Sock

Fire and Acoustic DPM Cavity Sock/Barrier



Polypipe TDI

Properties

- Provides 2 hours fire integrity and insulation in a concealed cavity.
- Easy to use.
- Can be friction or mechanically fixed.
- The DPM is manufactured to BS EN 13967:2004.



32

The TDI Cavity Sock is designed to restrict the spread of fire and smoke in concealed cavities particularly within external masonry or timber framed walls. This product also complies with acoustic requirements of Building Regulations Part E.

Easy to use, acoustic and fire valuation for separating floor junction in timber joists, concrete, steel concrete composite and external flanking wall junction that incorporates a cavity tray.

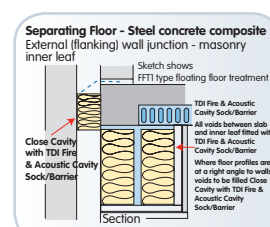
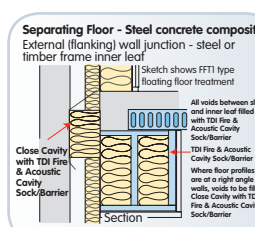
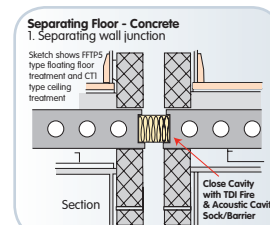
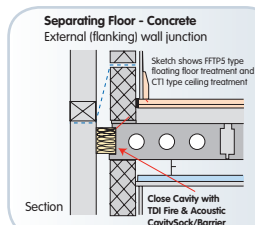
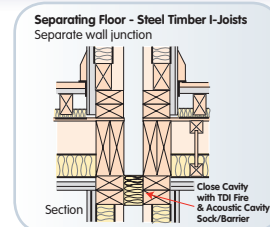
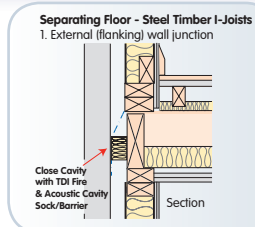
Can be friction or mechanically fixed.

Manufactured from 50mm to 100mm deep x 100mm to 300mm wide and supplied in 2.44 metre lengths. Other sizes available to order.

The Superior Quality Damp Proof Membrane is manufactured to BS EN 13967:2004.

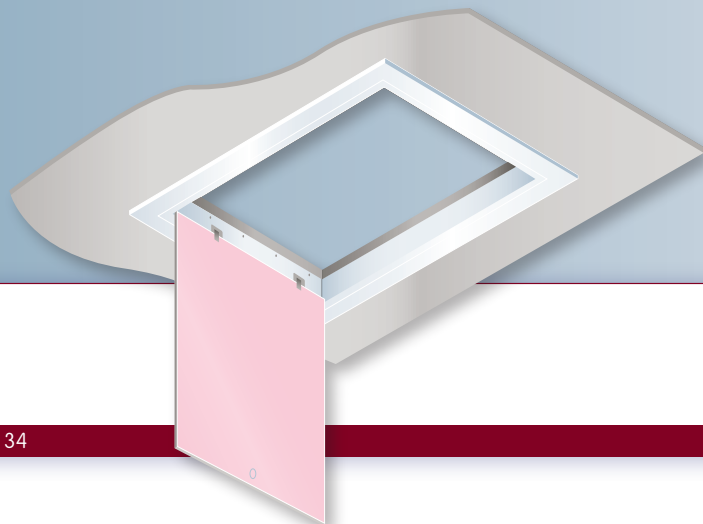
The Cavity Sock is tested by Warrington Fire Research, achieving two hours fire integrity at a furnace temperature of 1049°C, in accordance with Building Regulations requirements BS4760 Part 20.

33



TDI 0.35 Loft Hatch

Polypipe TDI



34

35

Achieves 0.35 U-value to comply with new Building Regulation document L1 & L2 as required by the robust detail.

Clear opening 600mm x 532mm (Overall size 733 x 656mm).

Injection moulded Rigid Polypropylene outer hatch, no welded corners.

Attractive moulded ceiling architrave surround and trap door sculpture, easy access for loft ladders, simple to fit, supplied in a box with fitting instructions.

Meets all Building Regulations for insulated loft hatches.

Factory assembled for easy fitting.

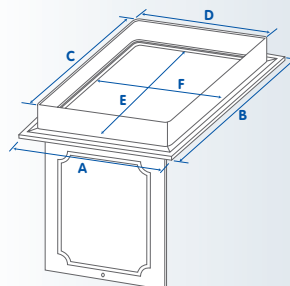
Robust Details 1st April 2002.

DETR Building Regulations loft hatch 8.04.

Ensure that loft hatch is fully draught stripped. Counterbearers and boarding should be provided if access to loft is required.

Note that U-value through loft hatch must be no worse than 0.35Wm²K (poorest acceptable U-value).

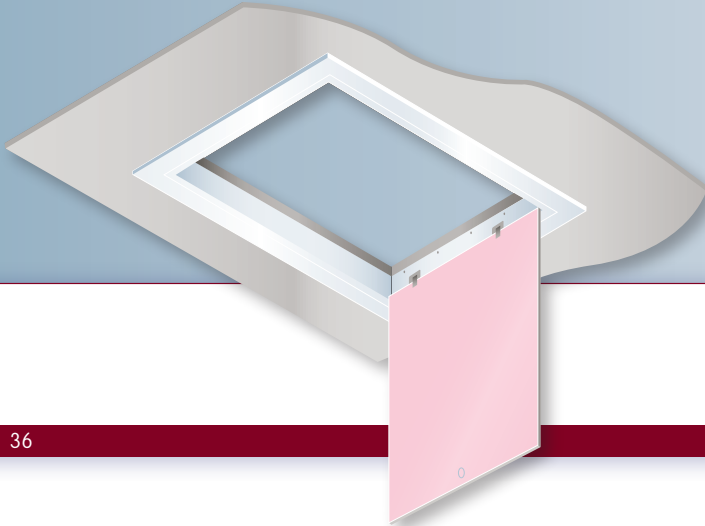
Dimensions



A	733mm
B	656mm
C	639mm
D	562mm
E	600mm
F	532mm

TDI 0.25 Loft Hatch

Polypipe TDI



36

37

The TDI 0.25 Loft Hatch is manufactured to comply with the extra 20% energy efficiency required by the conservation of fuel and power approved document L1A, April 2006.

Clear opening 600mm x 532mm (Overall size 733 x 656mm).

Injection moulded Rigid Polypropylene outer hatch, no welded corners.

Attractive moulded ceiling architrave surround and trap door sculpture, easy access for Loft Ladders, simple to fit, supplied in a box with fitting instructions.

Meets all Building Regulations for insulated loft hatches.

Factory assembled for easy fitting.

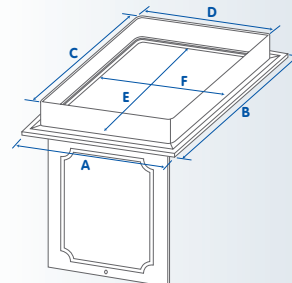
Robust Details 1st April 2002.

DETR Building Regulations loft hatch 8.04.

Ensure that loft hatch is fully draught stripped. Counterbearers and boarding should be provided if access to loft is required.

Note that U-value through loft hatch must be no worse than 0.35Wm²K (Poorest acceptable U-value).

Dimensions

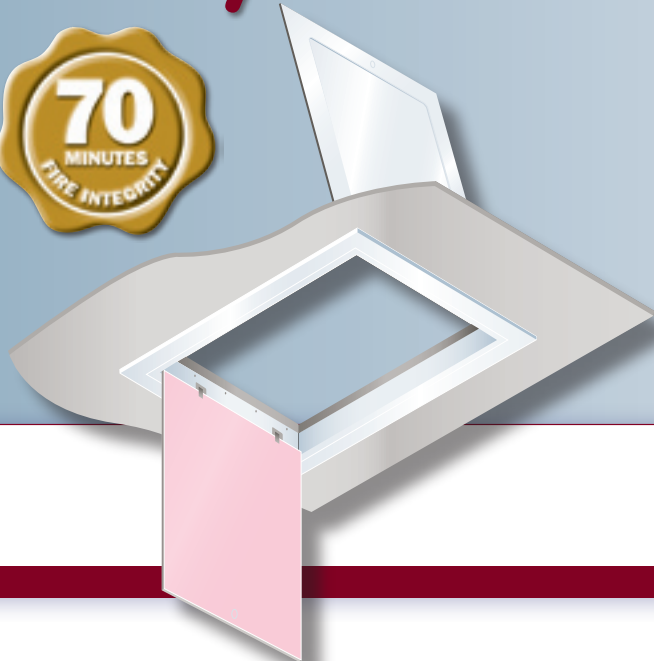


A	733mm
B	656mm
C	639mm
D	562mm
E	600mm
F	532mm

TDI Pyrohatch



Polypipe TDI



38

39

Achieves 0.35 U-value to comply with new Building Regulation document L1 & L2 as required by the robust detail.

Clear opening 600mm x 532mm (Overall size 733 x 656mm).

Injection moulded Rigid Polypropylene outer hatch, no welded corners.

Attractive moulded ceiling architrave surround and trap door sculpture, easy access for loft ladders, simple to fit, supplied in a box with fitting instructions.

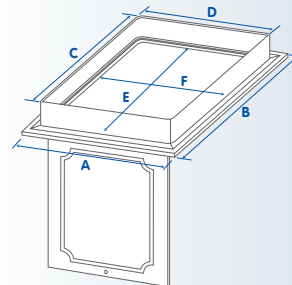
Meets all Building Regulations for insulated loft hatches.

Factory assembled for easy fitting.

Unique catch, outer hatch can only be closed when inner hatch has been closed, the inner hatch has a white powder coated finish.

TDI Pyrohatch system was tested at Warrington Fire Research and was found to be in accordance with the requirements of BS476 Part 20 achieving over 60 minutes integrity and insulation at a furnace temperature of 945°C.

Dimensions



A	733mm
B	656mm
C	639mm
D	562mm
E	600mm
F	532mm

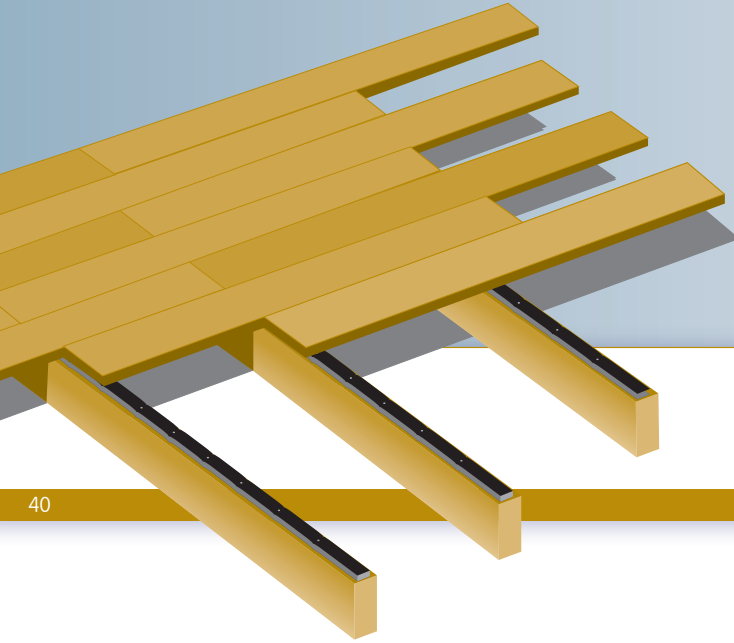
TDI Floor Muffle®

Enclosed Sound Reducing Strip

Polypipe TDI

Properties

- 3db improvement in the airborne sound insulation.
- 3db improvement in the impact sound insulation.
- Simple and fast to install
- No specialist tools needed

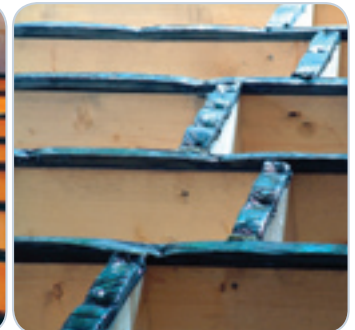


TDI Floor Muffle complies to current Building Regulations and is BBA certified.

TDI Floor Muffle comprises of a 20mm thick enclosed sound reducing strip, which is simply stapled to the top of the joists and sits between the timber floor joists and the floorboards. The floorboards can then be screwed directly through the floor muffle.

It is quick to install, no special tools required. When tested at the BRE, the product compressed by 50% and no further insulation was required to achieve 41dB as required by Building Regulations.

TDI Floor Muffle is designed for use in domestic houses only.



Polypipe TDI Product Certification

Polypipe TDI Products					
Damcor Insulated DPC			✓	✓	
Stonecor Insulated DPC		✓	✓	✓	
TDI Cavity Stop Insulated DPC		✓	✓		
Thermocor Cavity Closer			✓		
Policor Cavity Closer					
TDI Firestop Cavity Closer		✓	✓		
Multicor Cavity Closer			Applied		
Weathercor/F Cavity Closer		✓	✓		
Rigidcor/F Cavity Closer		✓	✓	✓	
Hycor System 3000/F Window Subframe Kit		✓	✓	✓	
Pyroflex Firebreak Product					
Pyrocor Firebreak Product					
Cavity Sock Firebreak Product			Applied		
TDI 0.25 TDI Loft Hatch			Applied		
TDI 0.35 TDI Loft Hatch			✓		
TDI Pyrohatch Loft Hatch			✓		
TDI Floor Muffle Floor Insulation	✓		✓	✓	



Polypipe TDI

Polypipe TDI
Unit 3 Unity Complex
Dale Rd North
Darley Dale
Matlock
Derbyshire
DE4 2HX

Tel: +44 (0) 1629 733177
Fax: +44 (0) 1629 732779
E-mail: tdi.sales@polypipe.com
Website: www.polypipe.com

Available from



FM31605

