



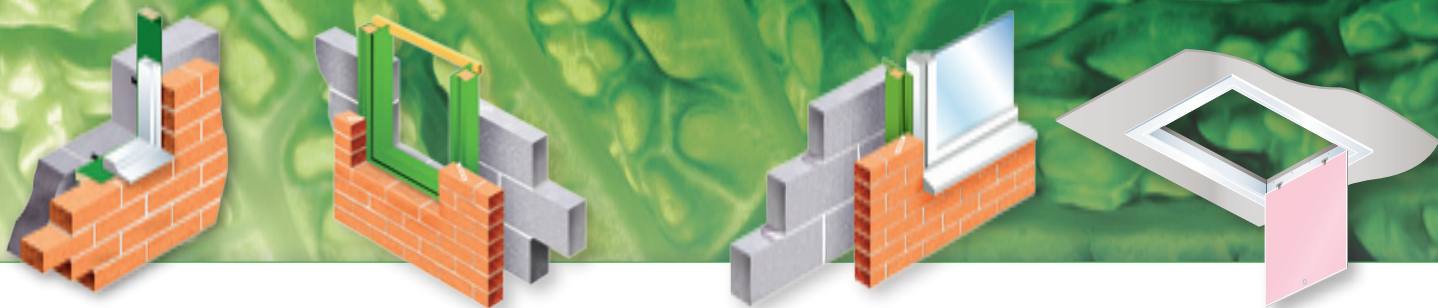
Polypipe TDI

0.25 Range

A range of Cavity Closers designed to achieve Energy Savings for both Part L Building Regulations and the Code for Sustainable Homes.



Polypipe
sustainability



Welcome to Polypipe TDI

2

We are pleased to introduce the NEW 0.25 Range.

Specially designed to assist in the Energy Saving Requirements for the achievement of “code levels” within the Code for Sustainable Homes.

The July 2007 Government Policy Statement “Building a Greener Future” proposes a “Carbon Improvement as compared to Part L (BRs 2006) of 25% by 2010. An Energy Saving of 25% would achieve the Code Level 3, 5.8 Energy Points, in the Code for Sustainable Homes.

When used in the constructions detailed in our “Table of ‘u’ values” (pages 22-23), our NEW 0.25 RANGE of Cavity Closers achieve ‘u’ values of 0.25 or better. That’s an improvement of 25% over Building Regulations 2006.

Polypipe TDI can provide the specialist knowledge and the manufacture of “bespoke” products within both the Building Regulations and the Fire Regulations criteria.

The 0.25 range includes

- Non-Combustible Insulated Cavity Closers
- Non-Combustible Insulated DPCs
- Non-Combustible Insulated Cavity Barriers
- Insulated Cavity Closer Sub Frame Kits
- Fire Resistant and Insulated Lofthatches

3

Polypipe Group has a demonstrable commitment to environmental concerns, we have been actively promoting more sustainable practices within our industry, whether through the use of recycled and recyclable materials, waste processes or innovative products that help create more sustainable environments.

Polypipe Group will continue to lead the field in addressing environmental concerns – our achievements to date have just been the start. We will seek to strengthen our product solutions in the coming months and years, offering the latest innovations that help the construction industry comply with and exceed the growing environmental legislation and guidelines.

We will achieve this in a variety of ways, through;

- Sustainable Materials
- Sustainable Processes
- Sustainable Applications

Together with our partners and customers we’re determined to show that sustainability isn’t just a pipe dream.

Polypipe TDI 0.25 Range Product Selector

Fire Retardent Requirement

Closed Cavity

Inner Blockwork returned into Cavity

Open Cavity

Straight build - Brickwork and Inner Blockwork

Loft Hatches

Fire & Acoustic Cavity Barrier

Stonecor 0.25

Pages 6-7

30
minutes

Weathercor/F 0.25

Pages 8-9

30
minutes

Rigidcor/F 0.25

Pages 10-11

30
minutes

Hycor System 3000/F 0.25

Pages 12-13

30
minutes

TDI Firestop 0.25

Pages 14-15

60
minutes

TDI Loft Hatch 0.25

Pages 16-17

TDI Pyrohatch 0.25

Pages 18-19

70
minutes

Cavity Sock

Pages 20-21

2
hours

Polypipe TDI Product Certification



Stonecor 0.25 Insulated DPC



30 minutes

Weathercor/F 0.25 Cavity Closer



BBA
ASSESSED

30 minutes

Rigidcor/F 0.25 Cavity Closer



30 minutes

Hycor System 3000/F 0.25
Window Subframe Kit



30 minutes

TDI Firestop 0.25 Cavity Closer



BBA
ASSESSED

60 minutes

Cavity Sock Firebreak Product

Applied

2 Hours

TDI Loft Hatch 0.25

Applied

-

TDI Pyrohatch 0.25



70 minutes



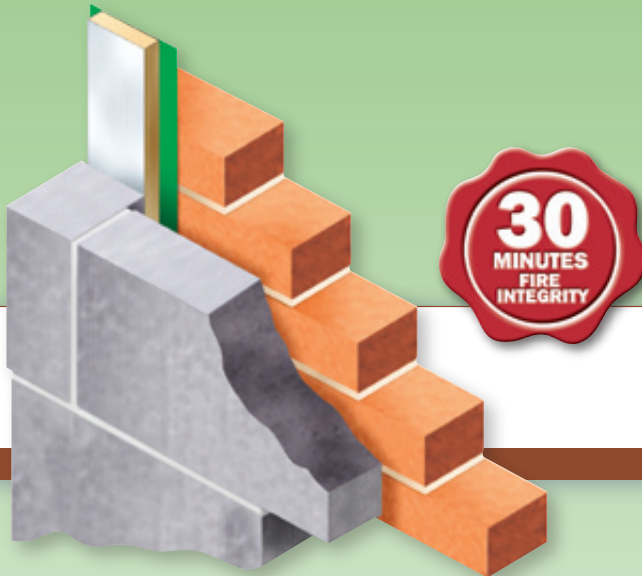
Stonecor 0.25[®]

Insulated DPC
Non-Combustible Insulation

Polypipe TDI

Properties

- 'u' values from 0.19 – 0.25
(Refer to 'u' Values Table - pages 22 – 23)
- 'r' Value of 0.76m² °C/W
- Easy to build as brickwork proceeds
- Easily cut with trowel or knife
- Light and robust
- Economical
- CFC and HFC free
- Also suitable for use with wooden window frames



6

7

Stonecor 0.25 has been thermally assessed by the British Board of Agreement.

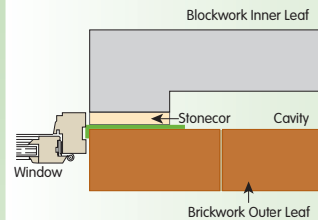
Multi purpose super flexible compressible foil faced mineral wool insulated DPC combining the advantages of Icelandic lava stone wool with a traditional DPC. Stonecor meets today's thermal and acoustic requirements in construction. Icerock is manufactured in Iceland and completely environmentally friendly in manufacture and use, and is also non-combustible to 700°C. The Polyethylene DPC is manufactured to BS6515.

Supplied in 10 Metre Rolls, 5 Per Pack.
165mm DPC x 100mm insulation.

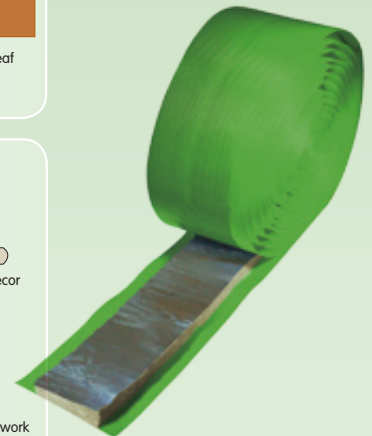
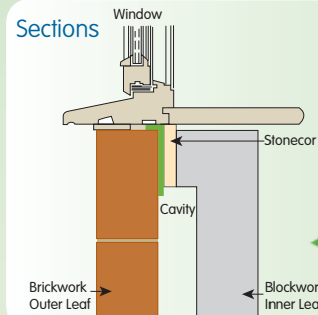
Installation/site work

Stonecor is simply and easily installed. Its flexibility enables it to be built in with no problems as brickwork proceeds, similar to traditional DPCs. It must be firmly built in as work proceeds with the blockwork and the Icerock tightly butted together. Where a joint occurs a minimum lap of 100mm of DPC is recommended.

Plan



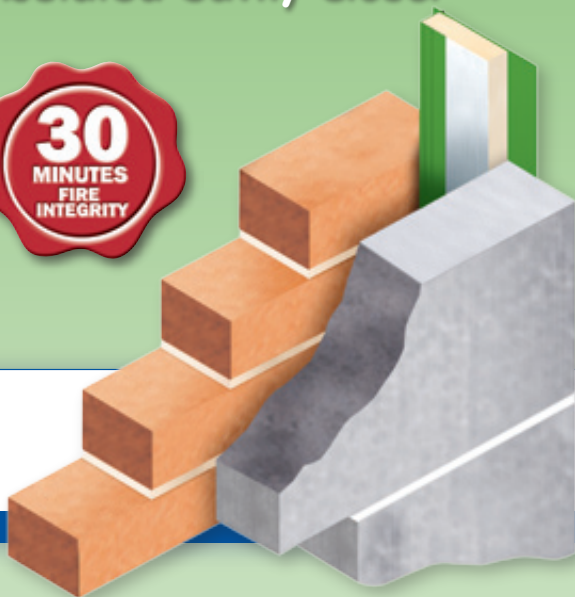
Sections



Weathercor/F 0.25[®]

Polypipe TDI

Insulated Cavity Closer



Properties

- 'u' values from 0.15 – 0.25
(Refer to 'u' Values Table - pages 22 – 23)
- Complete with flexible weatherseal
- Available for all cavity widths up to 240mm wide
- Very competitively priced
- Cuts installation time by 80% approx.
- Build in at construction stage
- Brick ties available if required
- Made from high quality PVCu
- Suitable for use with wooden frames
- Corners and brick ties now available



8

9

Weathercor/F 0.25 has been thermally assessed by the British Board of Agreement.

Manufactured from a foil faced non-combustible insulation in a PVCu profile incorporating a neoprene weatherstrip.

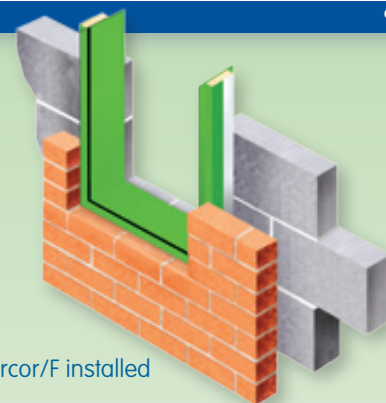
It has a 30 minute fire integrity, is suitable for severe weather condition areas.

Supplied in 2.44 metre lengths, 10 per pack.

Cavity widths are available from 50mm to 240mm.

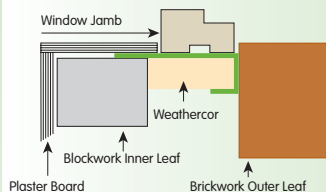
Can be manufactured to suit step reveal applications.

Now available with corners and brick ties for superior fixing.

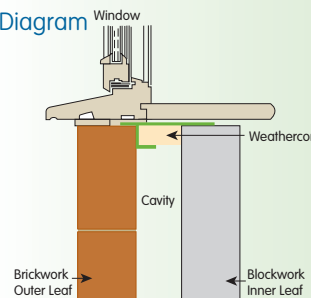


Weathercor/F installed

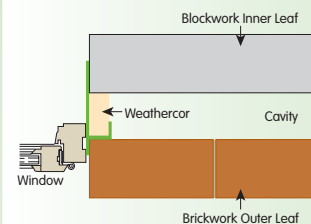
Section



Diagram



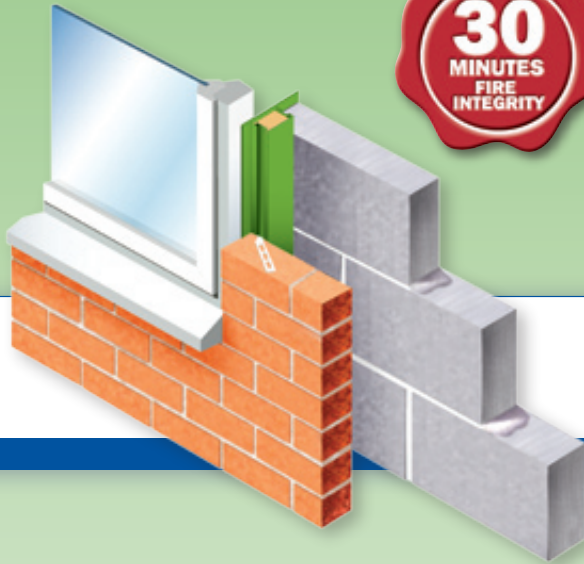
Section



Rigidcor/F 0.25[®]

Polypipe TDI

Insulated Cavity Closer/ Cavity Barrier



Properties

- 'u' values from 0.15 – 0.25
(Refer to 'u' Values Table - pages 22 – 23)
- Available in 5 sizes 50mm, 75mm, 85mm, 100mm and 120mm in 3 metre lengths
- Cuts installation time by 80% approx
- Build in at construction stage
- Minimum thermal resistance to Part L1 & L2
- Conforms to building regulations
- Very competitively priced
- Suitable for any sill options
- Complete with flexible weathersal



10

11

Rigidcor/F 0.25 has been thermally assessed by the British Board of Agreement.

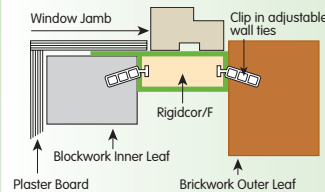
Insulated cavity closer/cavity barrier which achieves a minimum of 30 minutes fire integrity and is suitable for severe weather condition areas, all in one product.

Made from foil faced non – combustible insulation and from high quality PVCu. Complete with corners, joining pieces and clip in adjustable wall ties available to eliminate all waste. Accepts any size or style of window system and does not require dry lining or plaster to conform to building regulations.

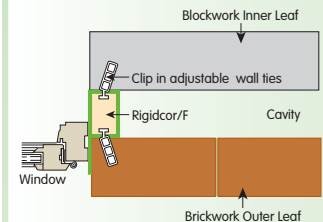
Supplied in 3 metre lengths, 5 per pack.
Cavity sizes 50mm, 75mm, 85mm, 100mm and 120mm.

Can be manufactured to suit step reveal applications.

Diagram

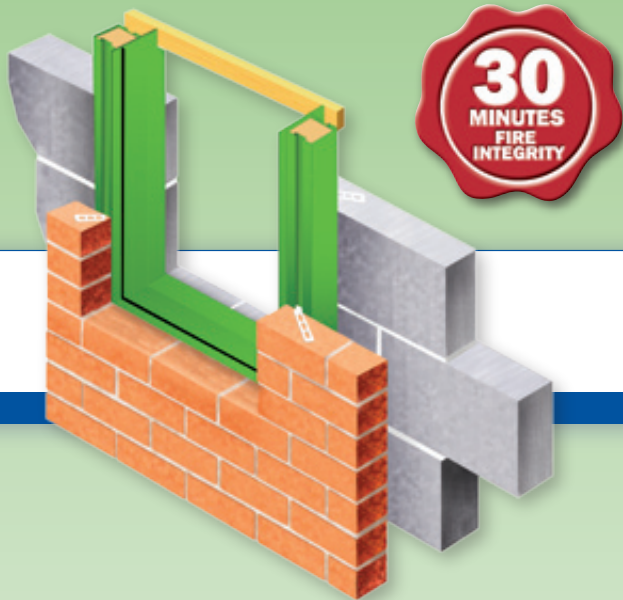


Section



Hycor System 3000/F[®] 0.25

Subframe System



Properties

- 'u' values from 0.15 – 0.25
(Refer to 'u' Values Table - pages 22 – 23)
- Available in 5 sizes 50mm, 75mm, 85mm, 100mm and 120mm
- Cuts installation time by 80% approx
- Build in at construction stage
- Minimum thermal resistance to Part L1 & L2
- Conforms to building regulations
- Very competitively priced
- Suitable for any sill options
- Complete with flexible weatherseal



12

13

Hycor System 3000/F 0.25 has been thermally assessed by the British Board of Agreement.

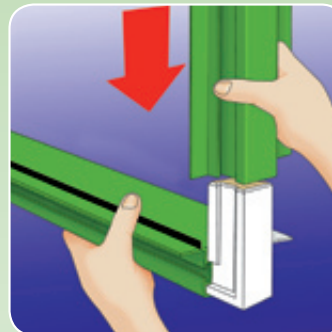
Insulated cavity closer/cavity barrier which achieves a minimum of 30 minutes fire integrity and is suitable for severe weather condition areas, all in one product.

Made from foil faced non – combustible insulation and from high quality PVCu. Complete with corners, joining pieces and clip in adjustable wall ties available to eliminate all waste. Accepts any size or style of window system and does not require dry lining or plaster to conform to Building Regulations

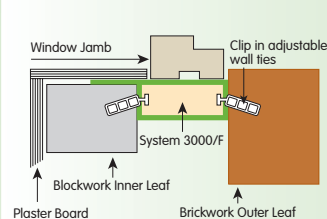
We supply in kit form cut to size and ready to install as a sub frame that can then be built around.

Cavity sizes 50mm, 75mm, 85mm, 100mm and 120mm.

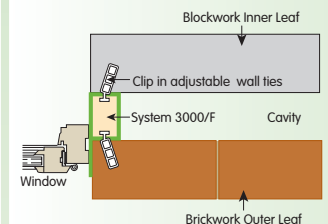
Can be manufactured to suit step reveal applications.



Diagram



Section



TDI Firestop 0.25[®]

Insulated Cavity Closer

Polypipe TDI



Properties

- 'u' values from 0.15 – 0.25
(Refer to 'u' Values Table - pages 22 – 23)
- Damp proofs
- Insulates
- Fire stops
- Ideal for timber framed buildings
- Eliminates the cold bridge
- No special installation techniques
- Easily cut with a knife
- incorporates Polyethylene DPC to British Standard BS6515

14



15

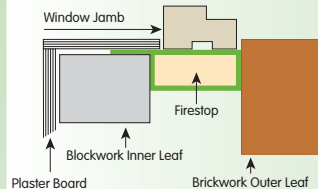
TDI Firestop 0.25 has been thermally assessed by the British Board of Agreement.

Manufactured from a foil faced non-combustible ice rock mineral wool core completely enclosed in Polyethylene DPC for maximum protection against water penetration coupled with maximum insulation.

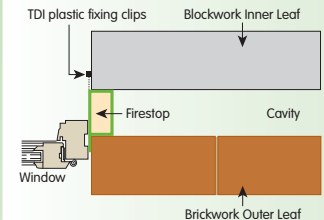
Supplied in 2.44 metre lengths, 20 per pack.
Cavity widths are available from 50mm to 125mm.

Fixing clips included.

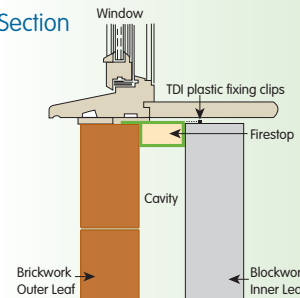
Diagram



Section

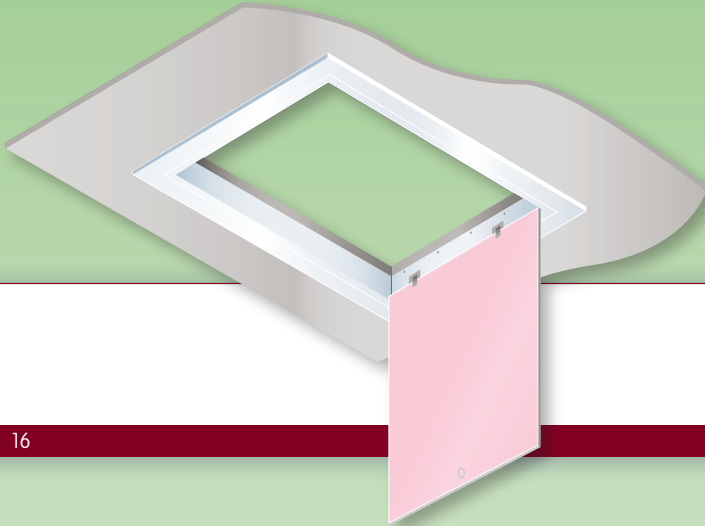


Section



TDI Loft Hatch 0.25

Polypipe TDI



16

17

The TDI 0.25 Loft Hatch is manufactured to comply with the extra 20% energy efficiency required by the conservation of fuel and power approved document L1A, April 2006.

Clear opening 600mm x 532mm (Overall size 733 x 656mm).

Injection moulded Rigid Polypropylene outer hatch, no welded corners.

Attractive moulded ceiling architrave surround and trap door sculpture, easy access for Loft Ladders, simple to fit, supplied in a box with fitting instructions.

Meets all Building Regulations for insulated loft hatches.

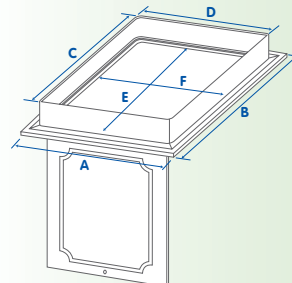
Factory assembled for easy fitting.

Robust Details 1st April 2002.

DETR Building Regulations loft hatch 8.04.

Ensure that loft hatch is fully draught stripped. Counterbearers and boarding should be provided if access to loft is required. Note that U-value through loft hatch must be no worse than 0.35Wm²K (Poorest acceptable U-value).

Dimensions



A 733mm

B 656mm

C 639mm

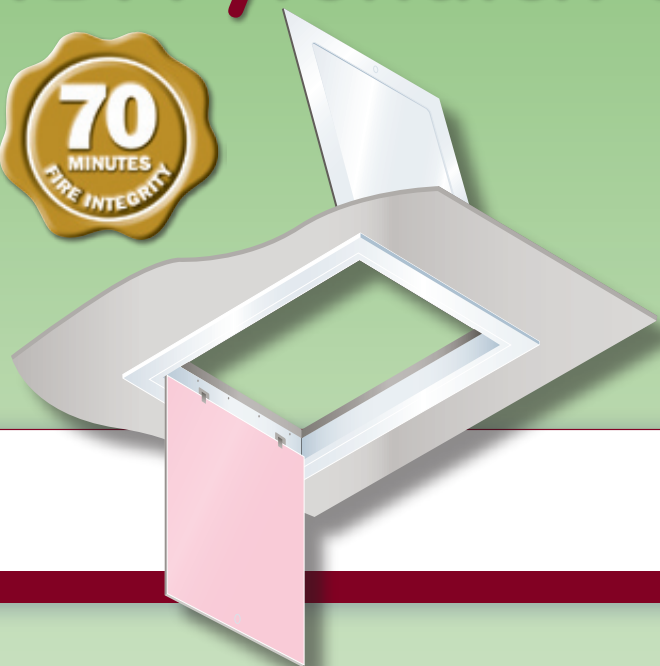
D 562mm

E 600mm

F 532mm

TDI Pyrohatch 0.25

Polypipe TDI



18

19

Achieves 0.25 U-value to comply with new Building Regulation document L1 & L2 as required by the robust detail.

Clear opening 600mm x 532mm (Overall size 733 x 656mm).

Injection moulded Rigid Polypropylene outer hatch, no welded corners.

Attractive moulded ceiling architrave surround and trap door sculpture, easy access for loft ladders, simple to fit, supplied in a box with fitting instructions.

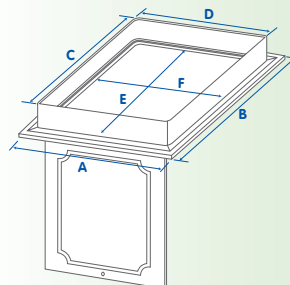
Meets all Building Regulations for insulated loft hatches.

Factory assembled for easy fitting.

Unique catch, outer hatch can only be closed when inner hatch has been closed, the inner hatch has a white powder coated finish.

TDI Pyrohatch system was tested at Warrington Fire Research and was found to be in accordance with the requirements of BS476 Part 20 achieving over 60 minutes integrity and insulation at a furnace temperature of 945°C.

Dimensions



A	733mm
B	656mm
C	639mm
D	562mm
E	600mm
F	532mm

Cavity Sock

Fire and Acoustic DPM Cavity Sock/Barrier



Polypipe TDI

Properties

- Provides 2 hours fire integrity and insulation in a concealed cavity.
- Easy to use.
- Can be friction or mechanically fixed.
- The DPM is manufactured to BS EN 13967:2004.



20

21

The TDI Cavity Sock is designed to restrict the spread of fire and smoke in concealed cavities particularly within external masonry or timber framed walls. This product also complies with acoustic requirements of Building Regulations Part E.

Easy to use, acoustic and fire valuation for separating floor junction in timber joists, concrete, steel concrete composite and external flanking wall junction that incorporates a cavity tray.

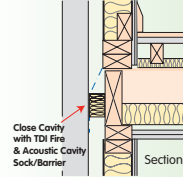
Can be friction or mechanically fixed.

Manufactured from 50mm to 100mm deep x 100mm to 300mm wide and supplied in 2.44 metre lengths. Other sizes available to order.

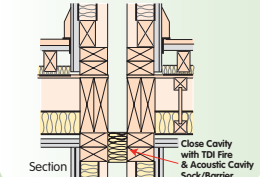
The Superior Quality Damp Proof Membrane is manufactured to BS EN 13967:2004.

The Cavity Sock is tested by Warrington Fire Research, achieving two hours fire integrity at a furnace temperature of 1049°C, in accordance with Building Regulations requirements BS4760 Part 20.

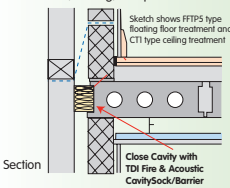
Separating Floor - Steel Timber I-Joists
1. External (flanking) wall junction



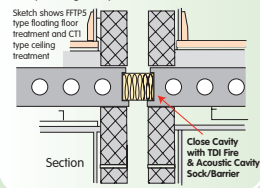
Separating Floor - Steel Timber I-Joists
Separate wall junction



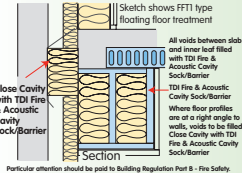
Separating Floor - Concrete
External (flanking) wall junction



Separating Floor - Concrete
1. Separating wall junction



Separating Floor - Steel concrete composite
External (flanking) wall junction - steel or timber frame inner leaf



Separating Floor - Steel concrete composite
External (flanking) wall junction - masonry inner leaf

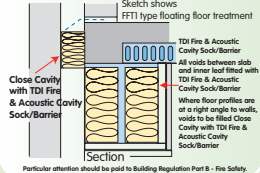


Table of 'u' values

The below table has been compiled from thermal assessments by the British Board of Agreement.

All calculations are based on the back edge of the window frame being placed 30mm back from the inside edge of the outer brick work.

Junction type:	Default ψ - values in IP1/06 (Wm ² K ⁻¹)	Polypipe 25% ψ - value improvement (Wm ² K ⁻¹)
Jamb	0.05	0.0375*
Sill	0.04	0.03*

* These ψ -values (25% improvement) may be used for the following products & constructions in SAP/SBEM

Stonecor 0.25

Cavity Width	Wall Construction	Wall U-value (Wm ⁻² K ⁻¹)	Block type
75mm	Full fill insulation	0.25	Durox Supabloc, Durox Supabloc 4, Durox Supabloc 7, Hemelite Standard, Topcrete Standard
90mm	Full fill insulation	0.23 - 0.25	
100mm	Full fill insulation	0.21 - 0.25	
120mm	Full fill insulation	0.19 - 0.25	

Weathercor/F 0.25

Cavity Width	Wall Construction	Wall U-value (Wm ⁻² K ⁻¹)	Block type
75mm	Partial fill insulation with 25mm air gap	0.25	Durox Supabloc, Durox Supabloc 4, Durox Supabloc 7, Hemelite Standard, Topcrete Standard
	Full fill insulation	0.25	
90mm	Partial fill insulation with 25mm air gap	0.20 - 0.25	
	Full fill insulation	0.23 - 0.25	
100mm	Partial fill insulation with 25mm air gap	0.18 - 0.25	
	Full fill insulation	0.21 - 0.25	
120mm	Partial fill insulation with 25mm air gap	0.15 - 0.25	
	Full fill insulation	0.19 - 0.25	
140mm	Full fill insulation	0.17 - 0.25	

Rigidcor/F 0.25 & Hycor System 3000/F

Cavity Width	Wall Construction	Wall U-value (Wm ⁻² K ⁻¹)	Block type
75mm	Partial fill insulation with 25mm air gap	0.25	Durox Supabloc, Durox Supabloc 4, Durox Supabloc 7, Hemelite Standard, Topcrete Standard
	Full fill insulation	0.25	
100mm	Partial fill insulation with 25mm air gap	0.18 - 0.25	
	Full fill insulation	0.21 - 0.25	
120mm	Partial fill insulation with 25mm air gap	0.15 - 0.25	
	Full fill insulation	0.19 - 0.25	

Firestop 0.25

Cavity Width	Wall Construction	Wall U-value (Wm ⁻² K ⁻¹)	Block type
75mm	Partial fill insulation with 25mm air gap	0.25	Durox Supabloc, Durox Supabloc 4, Durox Supabloc 7, Hemelite Standard, Topcrete Standard
	Full fill insulation	0.25	
90mm	Partial fill insulation with 25mm air gap	0.20 - 0.25	
	Full fill insulation	0.23 - 0.25	
100mm	Partial fill insulation with 25mm air gap	0.18 - 0.25	
	Full fill insulation	0.21 - 0.25	
120mm	Partial fill insulation with 25mm air gap	0.15 - 0.25	
	Full fill insulation	0.19 - 0.25	
140mm	Partial fill insulation with 25mm air gap	0.13 - 0.25	
	Full fill insulation	0.17 - 0.25	
160mm	Full fill insulation	0.15 - 0.25	

Polypipe TDI

Polypipe TDI
Unit 3 Unity Complex
Dale Rd North
Darley Dale
Matlock
Derbyshire
DE4 2HX

Tel: +44 (0) 1629 733177
Fax: +44 (0) 1629 732779
E-mail: tdi.sales@polypipe.com
Website: www.polypipe.com

Available from



FM31605



Mixed Sources

Product group from well-managed forests, controlled sources and recycled wood or fiber

www.fsc.org Cert no. SA-COC-1594
© 1996 Forest Stewardship Council



Polypipe