

### Properties

- 'r' value of 1m<sup>2</sup> kw
- 'k' value of 0.03w/m
- Complies with Building Regulations Part L1a
- Manufactured in 2.44 metre lengths
- Fits all cavity widths up to 100mm wide
- Suitable for any window size, one size fits all
- Complete with flexible weatherseal
- Corners and brick ties now available



TDI Multicor is an insulated cavity closer that is suitable for use in severe weather conditions.

One size fits all - can be cut to fit any window size.

The TDI Multicor insulated cavity closer is manufactured from high quality PVCu and comes complete with flexible weatherseal and fits all cavity widths up to 100mm wide, one size fits all.

Very competitively priced Multicor can be built in at construction stage or retro fit, there are no clips required with Multicor cavity closer, simply nail to brickwork.

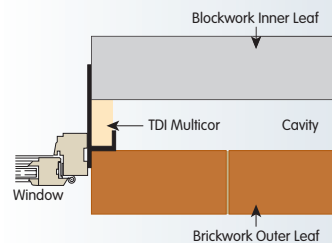
Multicor is designed to be suitable for use with both PVCu and wooden frames.

Now available with corners and brick ties for superior fixing.



Simple to cut -  
one size fits all

### Diagram



Installation

### Section

