

The below range of Terrain PVCu fittings allow boss sockets to be retro-fitted to existing pipework, allowing additional connections to be made with ease.



122 Self-Locking Boss Ring Seal Socket

Features and benefits:

Solvent weld onto pipework

Allows adaption to 32 & 40mm waste pipe

Ring seal socket

Self locking boss

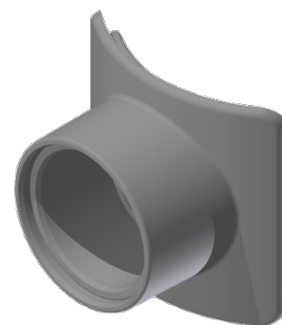
112 Two-Part Waste Solvent Socket

Features and benefits:

Solvent weld onto pipework

Allows adaption to 32, 40 and 50mm waste pipe

Solvent socket



112P Strap-On Boss

Features and benefits:

Clamps onto pipework

Allows adaption to 32 & 40mm waste pipe

Ring seal socket

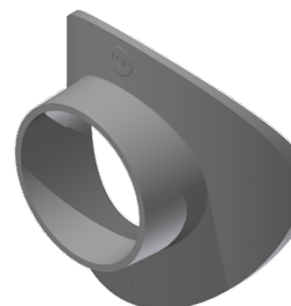
115P Adaptor Saddles

Features and benefits:

Solvent weld onto pipework

Allows adaption to 32, 40 & 50mm waste pipe

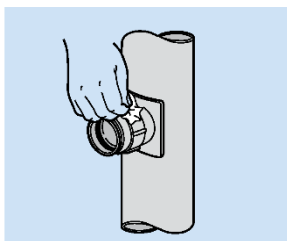
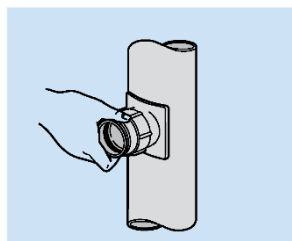
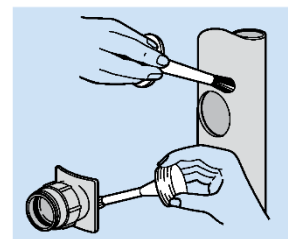
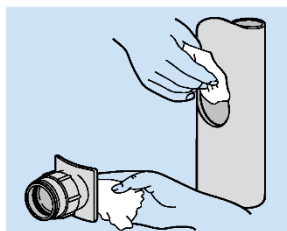
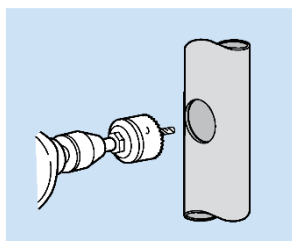
Solvent boss horn spigot



Hole Cutting template available, Product code: 9105.500

CODE TBUL-0007
Version: 1
Issued: 14/11/24

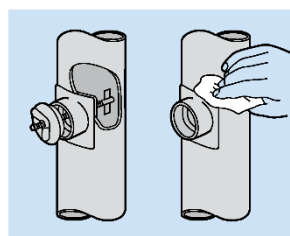
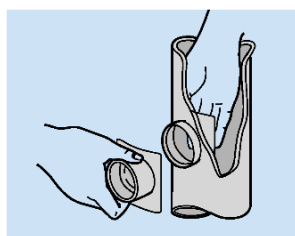
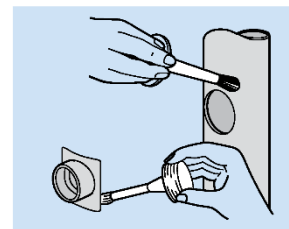
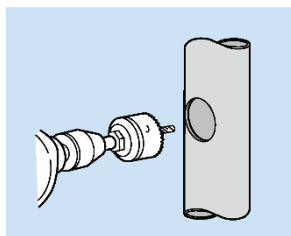
122 Self-Locking Boss Ring Seal Socket



- Cut correct hole size and deburr:
 - 122.4.15 – 64mm
 - 122.4.125 – 60mm
- Slacken nut on boss to full extent. Enter boss into hole keeping the keyway to the last piece to enter the hole. Tighten outer locking nut.
- Once satisfied that the boss fits neatly into the pipe remove and clean all mating surfaces with Terrain Cleaner 9101.
- Apply solvent cement 9100 to all mating surfaces.
- Re-enter boss into the pipe. Screw up until hand tight and remove excess cement.

CODE TBUL-0007
Version: 1
Issued: 14/11/24

112 Two-Part Waste Solvent Socket

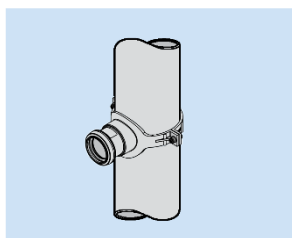
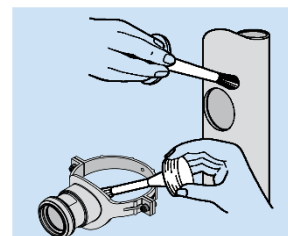
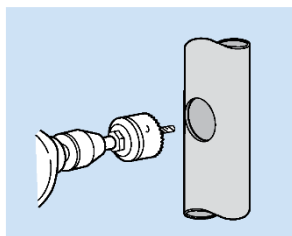


- Cut correct hole size and deburr:
 - 112.4.125 – 48mm
 - 112.3.15 – 57mm
 - 112.4.15 – 57mm
 - 112.4.2 – 70mm
 - 112.6.2 – 70mm
- Clean mating surfaces with Terrain Cleaner 9101
- Apply solvent cement 9100 to all mating surfaces. Pass inner component outward through hole from the inside of the pipe and push the outer component firmly on to it ensuring that the key and keyway are lined up. Ensure engraving reads: top 91¼ for waste top 88¾ for vent.
- Insert toggle bolt 9115 and screw up until boss is fully closed with flanges in contact with the pipe both inside and outside.

NOTE: Leave toggle bolt in position for approximately 15 minutes.

CODE TBUL-0007
Version: 1
Issued: 14/11/24

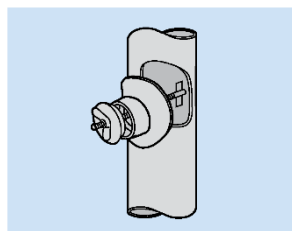
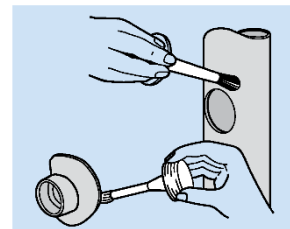
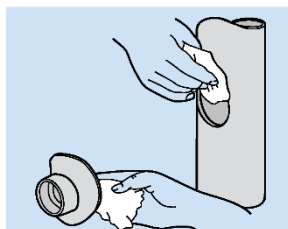
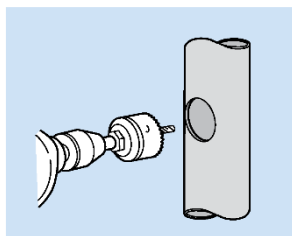
112P Strap-On Boss



- Cut correct hole size and deburr:
 - 112P.4.125 – 48mm
 - 112P.4.15 – 51mm
- Clean mating surfaces with Terrain Cleaner 9101
- Apply solvent cement 9100 to all mating surfaces. Push fitting into drilled hole firmly on to it ensuring that the pipe and fitting line up. Ensure engraving reads: top 91¼ for waste top 88¾ for vent.
- Tighten up bolts and allow to be held in position for approximately 15 minutes before using push fit socket.

CODE TBUL-0007
Version: 1
Issued: 14/11/24

115P Adaptor Saddles



- Cut correct hole size and deburr:
 - 115P.4 – 57mm
- Clean mating surfaces with Terrain Cleaner 9101
- Apply solvent cement 9100 to all mating surfaces. Push fitting into drilled hole firmly on to it ensuring that the pipe and fitting line up. Ensure engraving reads: top 91¼ for waste top 88¾ for vent.
- Insert toggle bolt 9115 and screw up until firm.
- For use with 117 Boss Adaptor

NOTE: Leave toggle bolt in position for approximately 15 minutes.

CODE TBUL-0007
Version: 1
Issued: 14/11/24