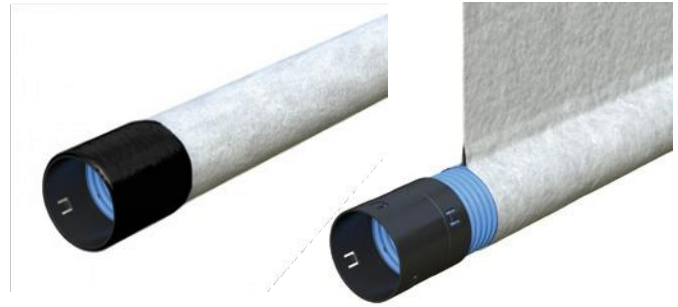


Linflex Fin and Narrow Filter Drains provide drainage for both surface and sub-surface water.

Linflex Type 6 Fin Drain is a PVCu perforated corrugated pipe, assembled with a composite plastic fin of two layers of geotextile, separated by a plastic core.

Linflex Type 8 Narrow Drain is a single wall PVCu perforated corrugated pipe, supplied in a geotextile. The geotextile is a non-woven fabric of heat-bonded polypropylene/ polyethylene filaments. Both products are delivered to site in a UV protective wrapper, which should not be removed until installation is imminent.



Linflex Type 8 Narrow Filter Drain

Linflex Type 6 Fin Drain

## Applications

For applications where sub-surface only drainage is required, e.g. low capacity drainage for keeping water out of road structures, Linflex Fin and Narrow Filter Drains may be used as an alternative.

Linflex products are for use in accordance with the requirements of Highways England.

## Performance

Linflex Type 6 Fin Drain is manufactured in accordance with MCHW, Volume 1, sub-clause 514.

Linflex Type 8 Narrow Drain is manufactured in accordance with MCHW, Volume 1, sub-clause 515.

Both pipes are manufactured to BS 4962:1989.

## Key Benefits

- Reduced requirement for aggregate
- Elimination of stone scatter by vehicles
- Reduced possibility of water logging of road base due to surface water inflow
- Manufactured to meet Highways England requirements (MCHW, Volume 3, Drawing F18, F19 and F20)
- Available in Type 6 and Type 8 configurations

## Technical Support

Detailed guidance and assistance is available.

For further information, please contact our Technical Team on **+44 (0) 1509 615 100** or email [civils@polypipe.com](mailto:civils@polypipe.com)

### LINFLEX TYPE 6 FIN DRAIN

NOM. SIZE (MM)	CODE	LENGTH (M)	FIN DEPTH (MM)	CONNECTOR CODE
80	FD80X12.5X600.A	12.5	600	DC80M
80	FD80X12.5X750.A	12.5	750	DC80M
80	FD80X12.5X900.A	12.5	900	DC80M
100	FD100X12.5X600.A	12.5	600	DC100M
100	FD100X12.5X750.A	12.5	750	DC100M
100	FD100X12.5X1000.A	12.5	1000	DC100M
160	FD160X12.5X600.A	12.5	600	DC160M
160	RFD160X12.5X750.A	12.5	750	DC160M

.A Made to order and are subject to lead times.

### LINFLEX TYPE 8 NARROW FILTER DRAIN

NOM. SIZE (MM)	CODE	LENGTH (M)	CONNECTOR CODE
60	GE60150.A	150	DC60
80	GE80100.A	100	DC80M
100	GE100100.A	100	DC100M
160	GE16045.A*	45	DC160M

.A Made to order and are subject to lead times.

\* Not BBA approved.

### JOINTING

Use couplers from our Landcoil range

All descriptions and illustrations in this publication are intended for guidance only and shall not constitute a 'sale by description'. All dimensions given are nominal and Polypipe may modify and change the information, products and specifications from time to time for a variety of reasons, without prior notice. The information in this publication is provided 'as is' on June 2016. Updates will not be issued automatically. This information is not intended to have any legal effect, whether by way of advice, representation or warranty (express or implied). We accept no liability whatsoever (to the extent permitted by law) if you place any reliance on this publication you must do so at your own risk. All rights reserved. Copyright in this publication belongs to Polypipe and all such copyright may not be used, sold, copied or reproduced in whole or part in any manner in any media to any person without prior consent. Polypipe is a registered trademark of Polypipe. All Polypipe products are protected by Design Right under CDPA 1988. Copyright © 2016 Polypipe. All rights reserved.