



POLYPIPE
ADVANTAGE

PA001

JULY 2023

POLYPIPE ADVANTAGE

The complete guide to Prefabricated
Polypipe Advantage Products



 **Polypipe**

Building Services

POLYPIPE ADVANTAGE

FASTER AND SIMPLER
INSTALLATIONS

Our bespoke fabrication service provides unique bespoke solutions for all your project needs.

Whether it's a drainage or water supply systems, Polypipe Advantage is the perfect solution for a range of challenges:

- ✓ Design changes once a project is in progress
- ✓ Multiple different drainage connections needed
- ✓ Minimising the space needed for pipework
- ✓ Unique wet room/kitchen/utility room/pod layouts
- ✓ Drainage solutions in confined spaces
- ✓ Rectifying plumbing faults

We are committed to helping you find the very best solution for your requirements, which is why our Polypipe Advantage Service doesn't have the design constraints faced by other manufacturers. By offering bespoke design and prefabrication, Polypipe Advantage makes the critical difference in efficient drainage installation work.

...it was Polypipe Building Services' ability to custom engineer low entry manifold piping that really impressed us. Being engineered specific to the project in Polypipe's prefabrication facilities, meant the turnaround time was minimal, ensuring a smooth installation.

Project Director of Briggs and Forrester MEP Ltd.



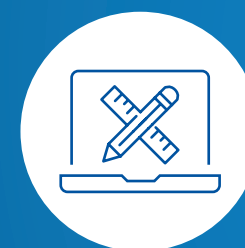
WORKING CLOSELY WITH YOU AND KEEPING YOU UPDATED AT EVERY STAGE

The Polypipe Advantage team takes your unique project requirements into consideration. From initial design and factory-controlled fabrication to carefully scheduled delivery, we give you the Advantage.



1 ENQUIRY RECEIVED AND DRAFT PROPOSAL GENERATED

Your enquiry will be addressed and swiftly forwarded to the Polypipe Advantage team for appraisal. Our technical specialists will then review the enquiry and provide a draft estimate.



2 ESTIMATE AND DESIGNS PRODUCED FOR CLIENT SIGN-OFF

The Polypipe Advantage team will then produce detailed fabrication drawing ready for client approval.



3 ORDERING AND FABRICATION

Our state-of-the-art fabrication and testing facility will create your system under factory-controlled conditions with stringent Health & Safety policies.



4 DISPATCH AND DELIVERY

After the system is completed, our team of logistics experts work with your project timelines to ensure each element of your unique system arrives to the site as scheduled.

DRAINAGE SYSTEMS

Our custom designed bends, branches and stacks in PVC and HDPE give installers the flexibility to handle the unique angles found in the construction of modern tall buildings. Butt welding, mirror welding, rod welding, extrude welding, socket welding, electrofusion welding and solvent welding are just some ways in which we are able to fabricate.

TERRAIN DRAINAGE (HDPE/PVC)



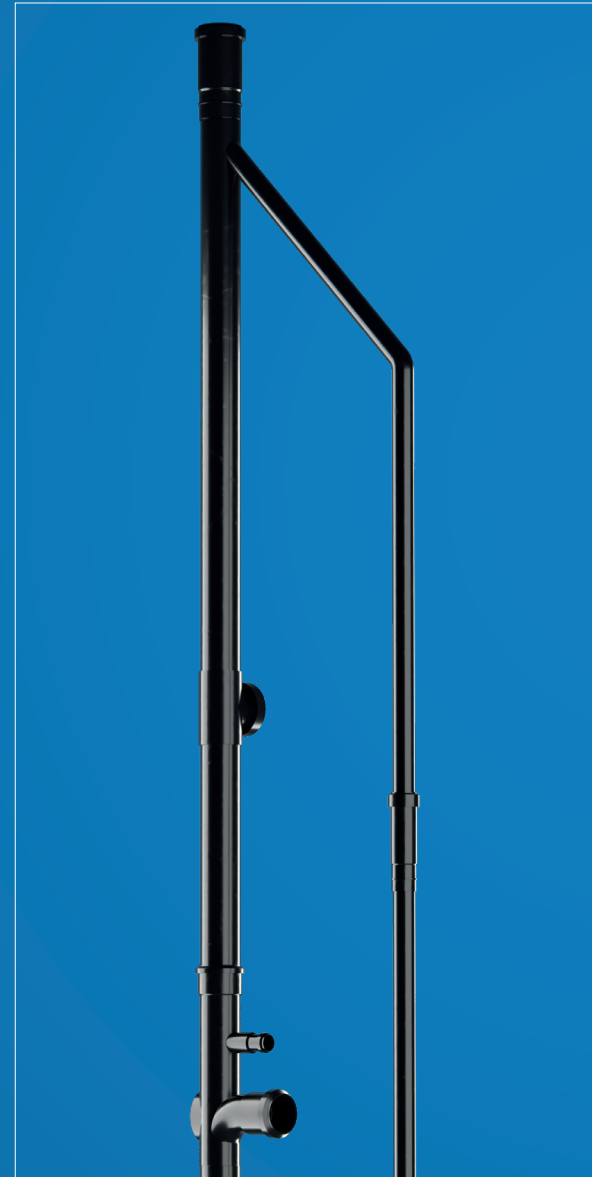
BENDS

- ✓ Available in HDPE & PVC
- ✓ Supplied ready for installation
- ✓ Bespoke measurements
- ✓ Spigotted or socketed ends



BRANCHES

- ✓ Available in HDPE & PVC
- ✓ Exact fit
- ✓ Flexible design
- ✓ Spigotted or socketed ends



BESPOKE OFFSITE HDPE & PVC STACKS

- ✓ Available in HDPE, PVC, PP (Terrain Q)
- ✓ Fully tested prior to being supplied
- ✓ Easy to handle
- ✓ Strong abrasion, chemical and temperature resistance

Our experience in engineered drainage solutions together with our state-of-the-art facilities mean we can design a solution to overcome your particular installation issue, from shallow offsets to bespoke traps which fit to existing pipework.

STUB STACKS



OFFSETS

- ✓ Shallow offsets
- ✓ Parallel offsets with a compound angle – avoid obstacles in the riser
- ✓ Easy to install
- ✓ Robust & lightweight



BESPOKE TRAPS

- ✓ Available in HDPE & PVC
- ✓ Interceptor traps
- ✓ Rainwater traps
- ✓ High impact/abrasion resistance



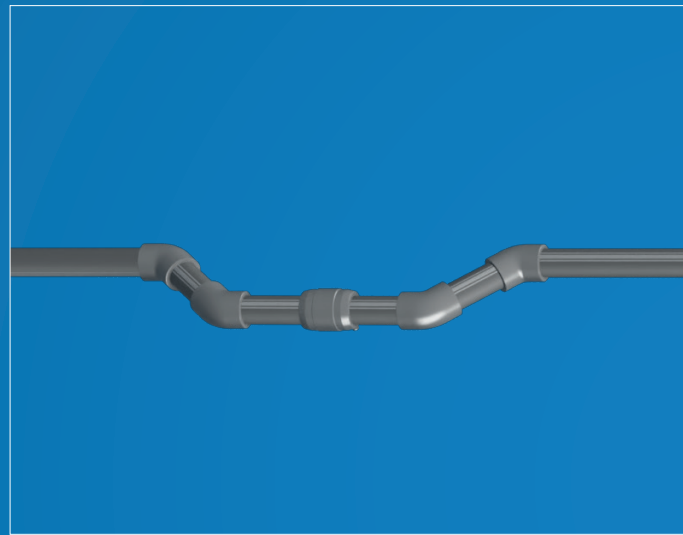
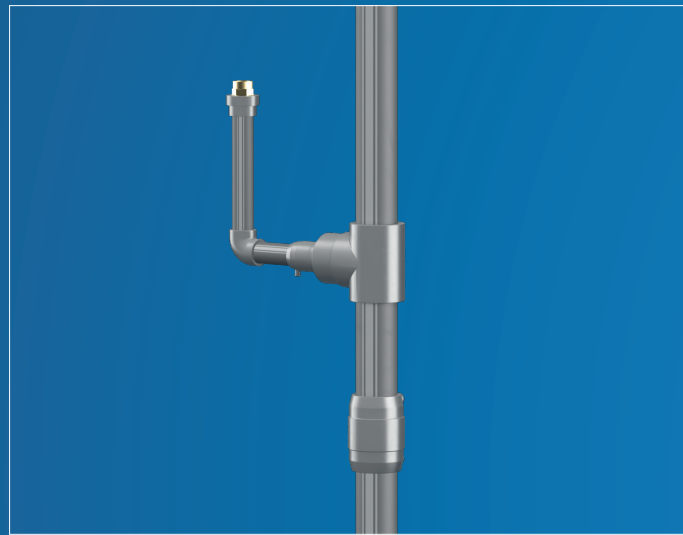
BESPOKE ONE OFFS

- ✓ Available in HDPE & PVC
- ✓ BES 6001 accredited manufacturer
- ✓ Accredited to the following Quality Management Systems:
BS EN ISO 9001:2015,
BS EN ISO 14001:2015,
BS OHSAS 18001:2007,
PAS 99:2012

SUPPLY SYSTEMS (BCW / LTHW)

Our versatile range of MecFlow risers, run outs and manifolds offer a wide variety of connections so they can be tailored to fit into any type of building including where there are complex angles in tight spaces.

TEE PIECE / ELBOW PIECE / STRAIGHT PIECE / MANIFOLD

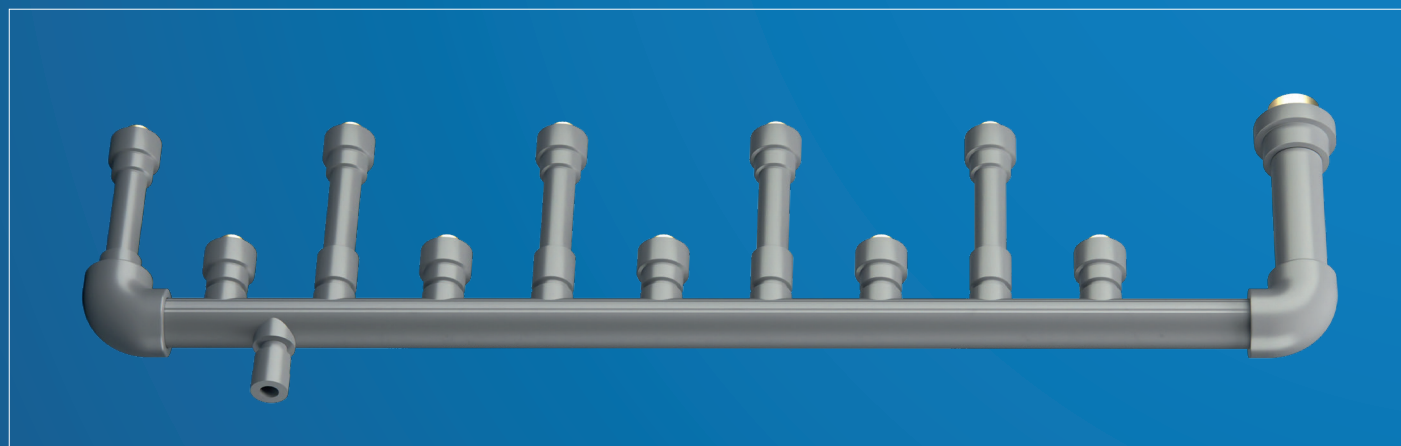


RISERS

- ✓ Award-winning supply system
- ✓ Ready to install onsite
- ✓ Antimicrobial protection
- ✓ Excellent mechanical strength

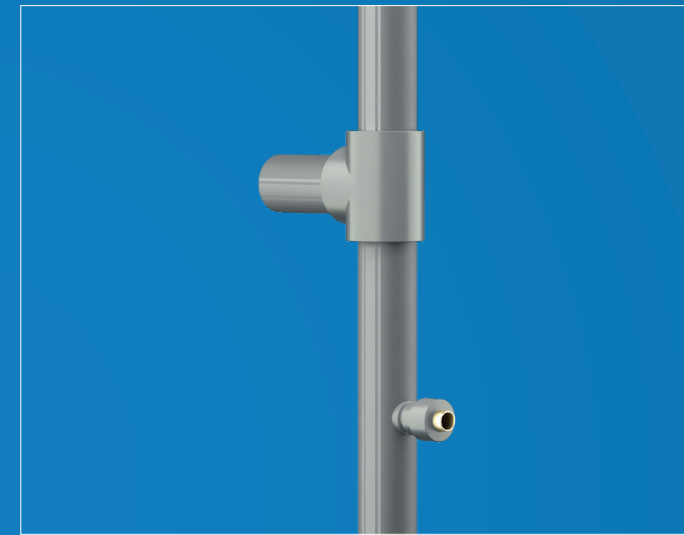
RUN OUTS

- ✓ Designed for strength & durability
- ✓ High resistance to impact
- ✓ Thermal resistance
- ✓ Anti-microbial protection



MANIFOLDS

- ✓ Less on-site waste
- ✓ Chemical resistance
- ✓ Low noise transmission



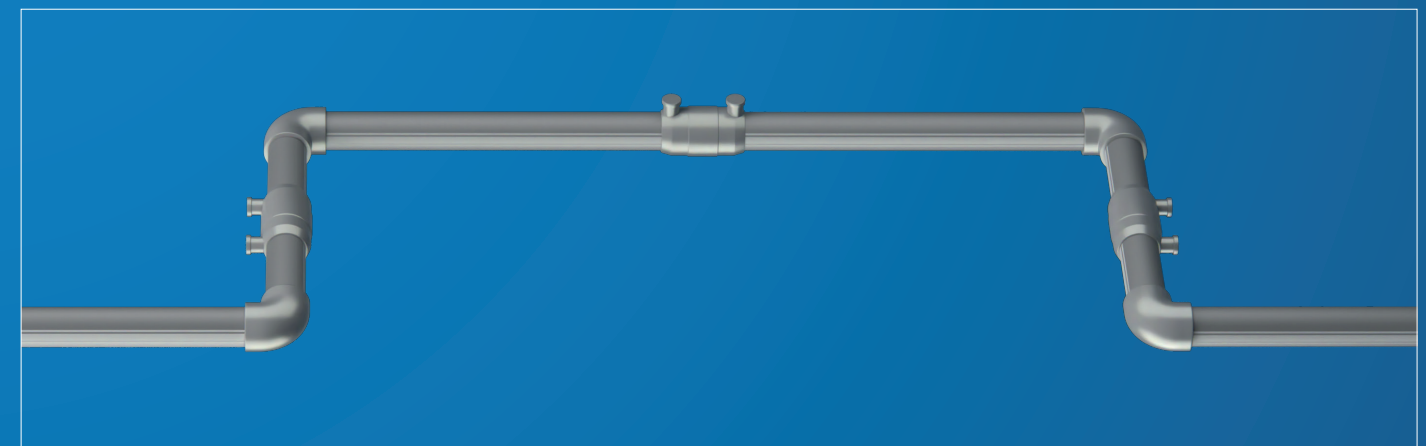
BRANCHES

- ✓ Temperature resistant
- ✓ Designed with BIM technology in line with ISO 15874 standards
- ✓ Robust construction for a variety of applications
- ✓ Bespoke sizing



FLANGE CONNECTIONS

- ✓ Multiple applications
- ✓ Bespoke sizing
- ✓ Various types
- ✓ Factory tested



BENDS

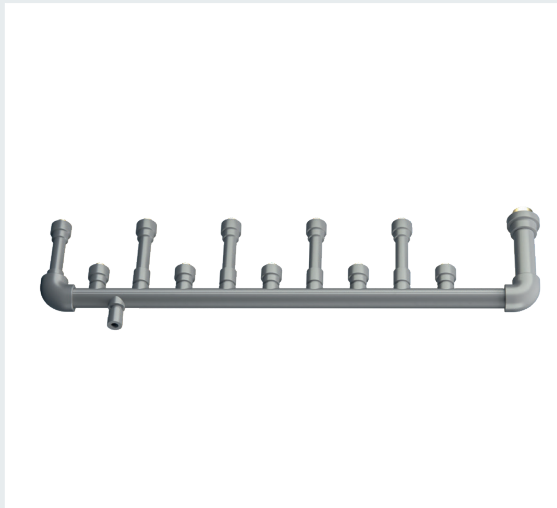
- ✓ Overcome unusual/non-standard right angles
- ✓ Custom made solutions
- ✓ Delivered & tested
- ✓ Build your own system

POLYPIPE ADVANTAGE TEAM

Real world examples of challenges the Polypipe Advantage team helped to overcome.

MAKING IT
SIMPLE

STANDARD SUPPLY

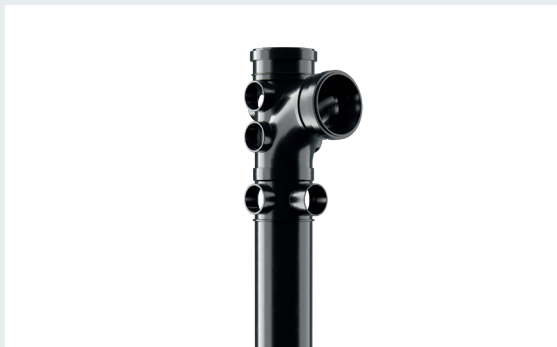


- ✓ Multiple pipe fittings/connections
- ✓ Compact & space saving
- ✓ Faster installation times
- ✓ Factory-controlled fabrication

POLYPIPE ADVANTAGE SUPPLY



STANDARD DRAINAGE



- ✓ Supplied in easy to build parts
- ✓ Compact & space saving
- ✓ Fast installation times
- ✓ Fabricated in a controlled environment, and tested for peace of mind

POLYPIPE ADVANTAGE DRAINAGE FLOAT



THE GENUIT GROUP

WE HELP CREATE A BETTER BUILT ENVIRONMENT

At Genuit Group we help create a better built environment, by developing and producing sustainable solutions to the key challenges faced in water, climate and ventilation management. Sustainability is core to our commercial strategy, driving innovation in both how we run our business and the products we create. We find solutions for the environmental challenges facing our infrastructure, our buildings and our communities, and delivering these at scale.

The Genuit Group of businesses are recognised as professionals and experts in their given markets. From commercial and residential applications, heating and ventilation, fabrications, roads and highways to plumbing, large scale water storage and drainage, tall building applications and green infrastructure solutions. Our goal is to be the leading, UK-focused, sustainable products Group – helping construction build better.



Together, we aim to provide solutions to the sustainability and construction challenges of today and in the future. The increased need for resilient drainage systems, for example, the need for important Green Urbanisation, for cleaner, healthier air, for simpler, faster and more cost-effective drainage installations, for innovative future-ready systems and for low/zero-carbon heating and low-carbon construction.

Helping construction build better is at the heart of what we do. Through our sustainability strategy, the resilient way in which we operate, our capabilities and scalability, and our speed and agility through working together to understand exactly what you need to succeed. It's an inclusive approach to business – and one our customers trust.



Polypipe Building Services

New Hythe Business Park

College Road

Aylesford

Kent

ME20 7PJ

Tel +44 (0) 1622 795200

Email buildingservices.technical@polypipe.com

www.polypipe.com/polypipeadvantage
