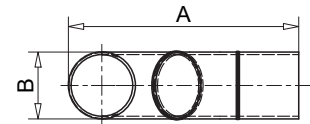
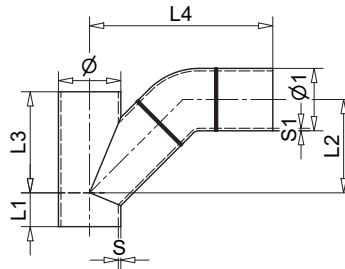
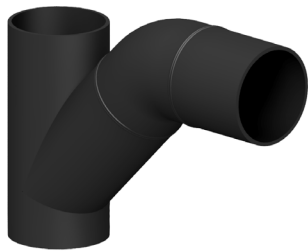
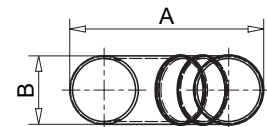
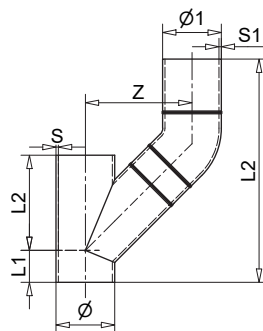
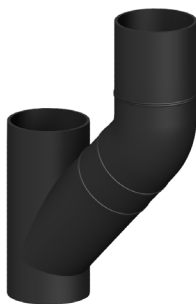


Terrain FUZE Stax - Terrain P.A.P.A.® Horizontal and Vertical P1

Allows for horizontal or vertical connection to a Terrain P.A.P.A.® valve. The horizontal version provides connection to a Terrain P.A.P.A.® valve in a ceiling void. Designed to allow for sufficient space for bracketing on both sections.



Product Code	Type	ø/ ø1 (mm)	S (mm)	S1 (mm)	L1 (mm)	L2 (mm)	L3 (mm)	L4 (mm)	A (mm)	B (mm)
9413.110110B	Horizontal	110/110	4.3	4.3	60	165	178	323	379	112
9413.160110B	Horizontal	160/110	6.2	4.3	70	211	244	364	444	160



Product Code	Type	ø/ ø1 (mm)	S (mm)	S1 (mm)	L1 (mm)	L2 (mm)	L3 (mm)	A (mm)	B (mm)	Z (mm)
9414.110110B	Vertical	110/110	4.3	4.3	60	178	419	312	113	200
9414.160110B	Vertical	160/110	6.2	4.3	70	244	479	386	160	250

## Features & Benefits

- UK manufactured
- Two options of diameter - 110 & 160mm
- Impact resistant
- Abrasion resistant
- Chemical resistant

PDS-021  
Version: 1  
Issued: 12/01/2023