

## FireBrake Over Sleeves For Domus Radial Ø75mm Semi-Rigid Duct

### Product Description & Overview

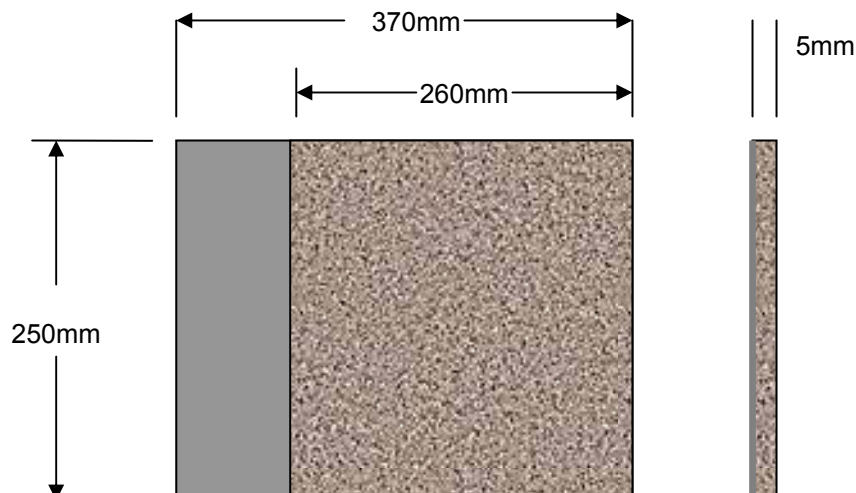
Product Code: RDFS75



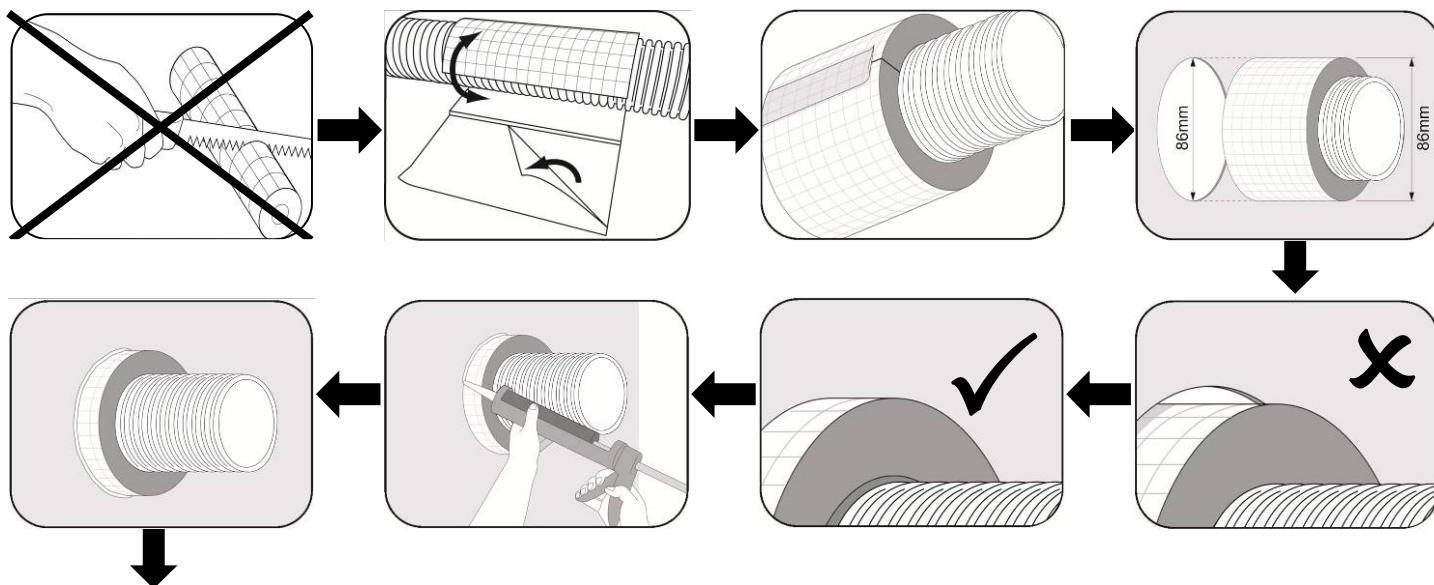
The Domus Radial FireBrake over-sleeve is designed to be used in horizontal installations around Domus Radial Ø75mm semi-rigid duct where the duct passes through partition walls and those walls are separating two different fire compartments. The instructions overleaf should be followed carefully to ensure correct installation.

The over-sleeve is made from a combination of mineral and organic fibre with graphite in an organic binder. It can cause irritation to eyes and may cause slight irritation to skin. The product does not present any acute toxicity hazards if ingested or inhaled however medical advice should be sought. For more information, a full material safety data sheet is available on request.

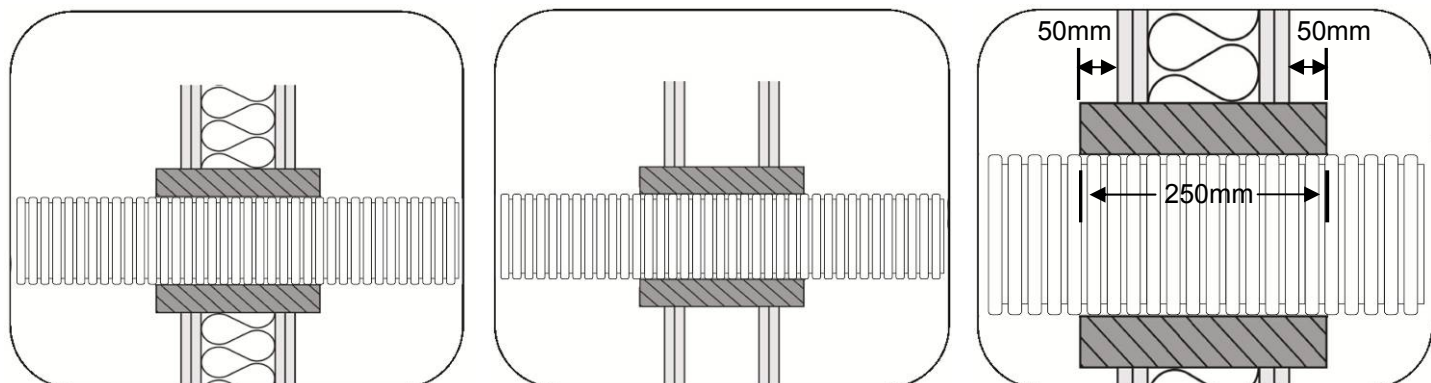
The Domus Radial FireBrake over-sleeve has been independently tested in accordance with EN1366-3 and achieves a fire resistance classification of EI120 (according to EN13501). This means that the product is able to prevent the spread of both heat and smoke gas for 120 minutes.



## FireBrake Over Sleeves For Domus Radial Ø75mm Semi-Rigid Duct Installation Instructions

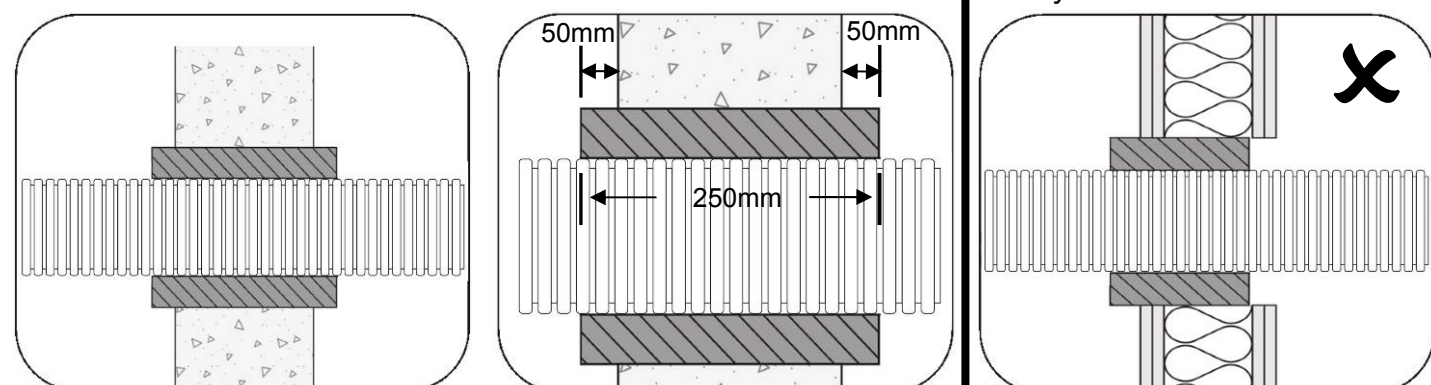


### Wall Penetrations – Drywall Partition



For timber stud partitions, seal must be  $\geq 100\text{mm}$  from studs with  $\geq 100\text{mm}$  of insulation (A1 or A2 to EN13501-1) between seal & stud

### Wall Penetrations – Solid Wall



Rigid walls must comprise concrete, aerated concrete or masonry  $\geq 650\text{kg/m}^3$  (Wall Type A) or concrete, masonry  $\geq 1100\text{kg/m}^3$  (Wall Type B)

### Fire Ratings – Wall Penetrations

Tested according to BS EN 1366 Part 3 offering up to EI120 according to EN 13501.