

# DOMUS RADIAL

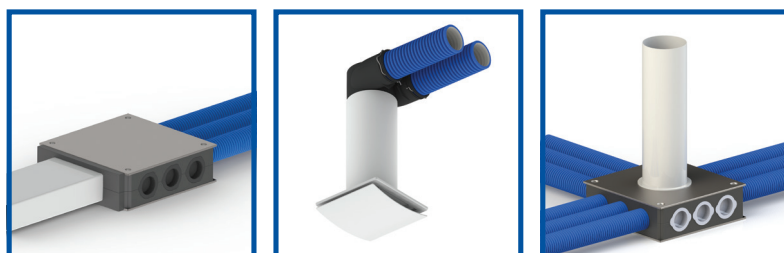
...versatile whole house air distribution systems.

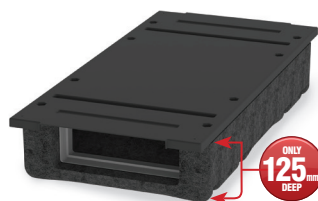
Our next generation of Domus Radial semi-rigid duct systems provide simple, quick and hassle free design and installation which saves time and money, whilst maximising in-situ performance.

- Suitable for multi-floor, single-floor and apartment configurations
- **NEW** slimline manifold (125mm deep) enables easy installation between joists or in tight spaces
- Compact manifold size also allows for greater location flexibility
- **NEW** outlet plenum with optional twin connection for increased air flow
- Optional integral flow control device allows outlet plenum to be connected directly to a grille - no air valve necessary
- Can integrate with Domus rigid systems to create versatile hybrid solutions
- Patents pending

## Key benefits:

- Simplified design layout makes the system ideal for new and refurb projects
- Increased air capacity for reduced air noise, low duct losses and improved appliance efficiency
- Ability to integrate stylish architectural grilles, to fit interior design scheme
- Reduces installation time by up to 60%, thereby lowering project costs





## Mechanical Extract Ventilation (MEV) System

### CMX MEV Radial Packs

- For properties with a floor area up to 275m<sup>2</sup>

Code	Description	Internal Terminal
<b>RDK-CMXS</b>	Includes CMX MEV unit, standard plenums and air valves	Ø125mm air valves x 5
<b>RDK-CMXS-AR</b>	Includes CMX MEV unit and flow control plenums	Order architectural grilles separately

### CMX MEV Unit Performance:

- Extremely low Specific Fan Power down to 0.24 W/(l/s)
- High air flow performance up to 120l/s

### Outlet plenums:



- Optional twin connection
- Integral flow control variants allow commissioning at first fixed stage
- Rapid fixing clips ensure secure installation with no air leakages



## Mechanical Ventilation with Heat Recovery (MVHR) Systems

### HRX MVHR Radial Packs

- For properties with a floor area up to 200m<sup>2</sup>

Code	Description	Internal Terminal
<b>RDK-HRXS</b>	Includes HRX MVHR unit, standard plenums and air valves	Ø125mm air valves x 10
<b>RDK-HRXS-AR</b>	Includes HRX MVHR unit and flow control plenums	Order architectural grilles separately
<b>RDK-HRXB</b>	Includes HRX MVHR summer bypass unit, standard plenums and air valves	Ø125mm air valves x 10
<b>RDK-HRXB-AR</b>	Includes HRX MVHR summer bypass unit and flow control plenums	Order architectural grilles separately

### HRX MVHR Unit Performance:

- Low Specific Fan Power down to 0.58 W/(l/s)
- Heat exchange efficiency up to 88%

### HRX2 MVHR Radial Packs

- For properties with a floor area up to 275m<sup>2</sup>

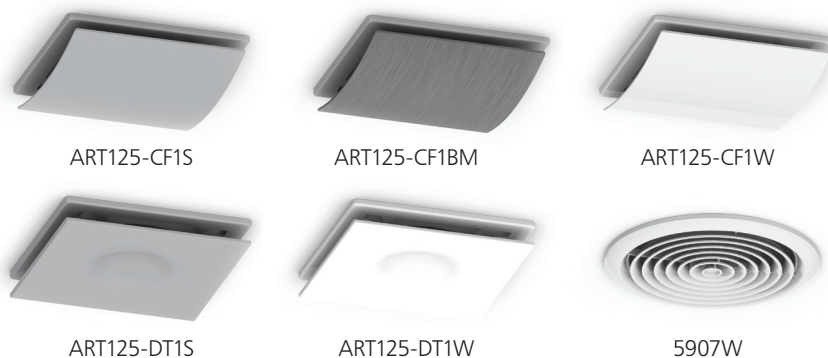
Code	Description	Internal Terminal
<b>RDK-HRX2S</b>	Includes HRX2 MVHR unit, standard plenums and air valves	Ø125mm air valves x 10
<b>RDK-HRX2S-AR</b>	Includes HRX2 MVHR unit and flow control plenums	Order architectural grilles separately
<b>RDK-HRX2B</b>	Includes HRX2 MVHR summer bypass unit, standard plenums and air valves	Ø125mm air valves x 10
<b>RDK-HRX2B-AR</b>	Includes HRX2 MVHR summer bypass unit and flow control plenums	Order architectural grilles separately

### HRX2 MVHR Unit Performance:

- Market leading Specific Fan Power down to 0.46 W/(l/s)
- Heat exchange efficiency up to 95%

### Architectural grilles:

To be fitted with flow control plenums; for aesthetic integration in the home.



### Accessories and additional packs:

- Semi-rigid duct insulation to sufficiently insulate duct in-line with Building Regulations
- FireBrake fire-stopping products designed to prevent the spread of fire through the duct system
- MVHR filters, condensate drainage kit and controls
- MEV air supply kits
- System expansion packs
- Room expansion pack (air valve)

### Specification:

- Chosen MVHR or MEV unit offers a 2 year warranty
- Manufactured in the UK
- Specification document available at [www.polypipe.com/ventilation/semirigidduct](http://www.polypipe.com/ventilation/semirigidduct)